

**Burwood Girls  
High School**

**Year 12**

**Assessment Booklet**

**2021**



CRICOS Provider No. 00588M  
Updated: 9 November 2020

***HSC Assessment Policy and Procedures 2021***

This edition 9/11/20

**Burwood Girls High School**

Address for correspondence:

Burwood Girls High School, Queen Street, Croydon NSW 2132

Telephone: (02) 9747 3355

Fax: (02) 9744 2797

Email: [burwoodg-h.school@det.nsw.edu.au](mailto:burwoodg-h.school@det.nsw.edu.au)

Website: <https://burwoodg-h.schools.nsw.gov.au>

# YEAR 12 ASSESSMENT POLICY & PROCEDURES 2021

## CONTENTS

<b>1) GENERAL INFORMATION</b>	<b>Page No.</b>
Introduction .....	4
Section 1: The School's Responsibilities .....	5
Section 2: The Student's Responsibilities.....	6
Section 3: Assessment Task Procedures .....	8
Section 4: Absence on day of Task .....	9
Section 5: Unsatisfactory Completion of a Course .....	10
Section 6: Disability Provisions.....	11
Section 7: Serious and non-serious attempts .....	12
Section 8: Cheating and Malpractice .....	12
Section 9: Reviews and Appeals .....	13
Section 10: Information and Advice .....	14
Section 11: Approved Calculators and Equipment Lists .....	14
Assessment Task Flow Chart.....	15
Glossary of Key Words .....	16
Example of Illness, Accident or Misadventure form .....	17
Sample Letter: Official Warning of 'N' Determination (HSC) .....	18
<b>2) SUBJECT INFORMATION</b>	
Aboriginal Studies .....	21
Ancient History.....	22
Biology .....	23
Business Studies .....	24
Chemistry .....	25
Chinese Beginners .....	26
Chinese Continuers .....	27
Chinese Extension .....	28
Chinese and Literature.....	29
Community and Family Studies .....	30
Dance .....	31
Design and Technology .....	32
Earth and Environmental Science .....	33
Economics .....	34
English Advanced .....	35
English EAL/D.....	36
English Extension 1 .....	37
English Extension 2 .....	38
English Standard .....	39
English Studies .....	40
Entertainment (VET) .....	41
French Beginners .....	44
French Continuers .....	45
French Extension .....	46
Geography .....	47
History Extension.....	48

<b>2) SUBJECT INFORMATION (continued)</b>	<b>Page No.</b>
Hospitality - Food and Beverage (VET).....	49
Indonesian Continuers .....	51
Indonesian Extension.....	52
Information and Digital Media (VET) .....	53
Italian Continuers .....	55
Japanese Beginners .....	56
Japanese Continuers .....	57
Japanese Extension.....	58
Korean Beginners .....	59
Korean and Literature .....	60
Korean Continuers .....	61
Korean In Context.....	62
Legal Studies .....	63
Mathematics Advanced.....	64
Mathematics Extension 1 .....	65
Mathematics Extension 2 .....	66
Mathematics Standard 2 .....	67
Mathematics Standard 1 .....	68
Modern History .....	69
Music 1 .....	70
Music 2 .....	71
Music Extension.....	72
Personal Development, Health & Physical Education .....	73
Physics .....	74
Society and Culture.....	75
Sports Coaching .....	76
Studies of Religion 2 unit .....	78
Studies of Religion 1 unit .....	79
Textiles and Design .....	80
Visual Arts .....	81
Work Studies .....	82

VET = Vocational Education & Training

# Introduction

**Student assessment provides evidence for making judgement about student achievement. This booklet will inform you clearly of assessment tasks that must be completed to show that you have satisfied the requirements of the course.**

The student must also **complete all course work to a satisfactory standard** in order to meet the requirements of the HSC course.

Your Year Advisers and the Careers Adviser are available to assist you if you have any concerns or problems regarding your Higher School Certificate, the Australian Tertiary Admission Rank (ATAR) or whether your pattern of study best suits the career path you wish to take.

It is most important to keep your Year Advisers up to date with changes to your study. They will provide you with support if you are experiencing any problems that may affect your studies. If you are going to be absent for any period of time, seek approval from the Principal first. Extended leave for Year 12 students is unlikely to be approved by the Principal.

HSC assessment in Year 12 gives credit for consistent performance. It may assess aspects of the course that are not examined in the Higher School Certificate examination. Burwood Girls High School has developed a program that covers NESA requirements, with complete fairness to students, and balance between courses. Students are required to be diligent and complete all tasks presented to them.

This assessment process will begin Term 4 of the preliminary year, and will finish at the end of Term 2 before the Trial Higher School Certificate examinations (excepting practical tasks, LOTE speaking tasks and culmination of practical projects).

Not every piece of work completed will be part of the “assessment” mark, some work is set to practise skills so that the students can see how well they understand the topic. **All set work should be regarded as an essential course requirement**, even when it is not included as an assessment task. Students will automatically fail a course if they do not make a satisfactory attempt to complete assessable tasks with a weighting of over 50%.

Attendance at all timetabled lessons is an important step to fulfilling course requirements. The Principal may decide that a student’s attendance has made it impossible for course outcomes to be achieved. NESA suggests that absences greater than 15% make it difficult to satisfactorily complete a course.

Students may also be deemed not to have satisfactorily completed a course if there is sufficient evidence of:

- a) failure to complete experiences specified in the syllabus, eg fieldwork, oral presentations, assignments, practical work, participation in class;
- b) non-serious or trivial preparation for exams.

Mia Kumar  
**Principal**

Karyn O’Brien  
**Deputy Principal**

Tara Credlin  
**Year 12 Student Adviser**

# 1. The School's Responsibilities

Burwood Girls High School has developed an assessment program for each course running. The school's responsibilities include providing information to students in relation to the following:

1

**Number of tasks** - Identifying a minimum number of tasks that will be used to measure students' achievement in each syllabus component. Three to four tasks of various types (e.g. formal examinations, practical tests, oral tests), including the Trial HSC exam, are sufficient to assess the components of a 2-unit course. For 1-unit courses, two to three tasks are sufficient

2

**Weightings** - Allocating weightings to each of the tasks in accordance with the component weightings and the school's judgement of the relative importance of each task. The minimum weighting for an individual task is 10%. The maximum weighting for an individual task is 40%. Only one task may be a formal written examination with a maximum weighting of 30%.

3

**Scheduling tasks** - Scheduling the assessment tasks for the HSC courses, being mindful of the demands these tasks will place on students and teachers.

4

**Written advice to students** - Providing students with written advice about the school's requirements for assessment in each course. This is generally provided to students 2 weeks prior to a task.

5

**The advice given to students must include:**

- i. The components and their weightings as specified in the assessment and examination materials on the Board's website
- ii. The general nature of each assessment task
- iii. A schedule of when assessment tasks are planned to take place. In addition, there must be provision for adequate notice of the precise timing of each assessment task
- iv. The weight value of each task in relation to the total weighted mark for the course
- v. Details of administrative arrangements associated with each task
- vi. Details of the school's policy on malpractice in assessment tasks
- vii. Details of the procedures to be implemented if tasks produce invalid or unreliable results. Note that the results of assessment tasks that have been completed by the students generally cannot be discarded

6

**Appropriate procedures: Marking, recording, reporting**

Marking of assessment tasks will be completed in accordance with the prescribed marking criteria. Students will be provided with their raw mark for each assessment task. Each student should receive clear feedback on their performance in every task. This feedback should indicate the student's attainment in the task relative to the outcomes and the student's relative position within the school group (rank order sheet published).

## 2. The Student's Responsibilities

Students have a range of responsibilities in relation to the successful attainment of the HSC credential. These include:

1

### **FAMILIARITY WITH ASSESSMENT POLICY**

You must be familiar with the assessment policies set out in this book for each subject you take.

2

### **ATTENDANCE**

Attend school, be aware of due dates for assessment tasks and complete tasks on time. If you are absent from school, you must check with your teachers to see if any assessment tasks have been set on the first day of your return to school.

3

### **PUNCTUALITY**

Be on time to assessment tasks as you will not be given an extension of time. If you are late to any task held in school time or at the beginning of the day, then the Deputy Principal or the Principal must verify that you have a legitimate reason for being late and give you a note to that effect.

4

### **ATTENDANCE ON DAY OF TASK**

Be present to do all in-school assessment tasks. Students who are absent on the day of the task must provide a doctor's certificate or other evidence explaining this absence. See Section 5 of this booklet: *Absence on the day of a task* for further information. You must sit for, or submit, a minimum of 50% of all assessment tasks on the due day.

5

### **ATTENDANCE DAY BEFORE THE TASK**

Be present the day before a task. Students who are absent the day before a task must provide a doctor's certificate explaining this absence. This includes when absent on a Friday when a task is completed on the following Monday.

6

### **HAND IN TASKS**

Hand in any take home assessment task on time. Work will only be accepted from the student themselves. If you are absent on the day a hand-in task is due, contact your teacher and email them a copy of your task. You must then see the Senior Deputy Principal about the need for an Illness/Misadventure.

7

### **SATISFACTORY COMPLETION OF COURSE**

Meet the requirements to satisfactorily complete all courses. See Section 5: Unsatisfactory Completion of a Course

8

#### **NOTIFICATION OF CLASHES FOR OTHER SCHOOL BUSINESS**

Notify your teacher and Head Teacher of any assessment problems in advance, e.g. clash of dates with an excursion or knockout team. You must discuss this situation with the Head Teacher of the subject that has the assessment task. If an alternative date cannot be found the assessment comes first.

9

#### **ILLNESS/MISADVENTURE AT TIME OF ASSESSMENT**

If you come to school and become ill on the day of an assessment task, or, have suffered a misadventure immediately prior to the day of an assessment task, **you must inform the Deputy Principal on the day of the task prior to the completion of the task**. You may **not** apply for Illness/Misadventure **after** the assessment. Illness/Misadventure forms must then be submitted to the Deputy Principal, supported by a doctor's certificate, upon your return to school.

10

#### **KNOWN ILLNESSES**

If you are a student with a known illness that is documented with the Deputy Principal and/or the School Counsellor, you can negotiate an extension only at the time of the issuing of the task.

11

#### **CHECKING OF TASKS**

Check the marking of each task when it is returned to you. Check your assessment rank when it is given to you.

12

#### **PROLONGED ABSENCES**

Some prolonged absences, for example, a holiday overseas, cannot be taken into account and could lead to you not meeting outcomes in that subject. You must seek approval from the Principal before you take your leave.



### 3. Assessment Task Procedures

1

#### NOTIFICATION OF TASK

You will be given at least **two weeks' notice in writing** of any assessment task. All of the class will be asked to sign a "record of issue/collection of task" form stating the date and time of day the task is due.

2

#### SUBMISSION OF DRAFTS

Students may not submit draft work for marking in the FIVE school days prior to the due date of the task. For example, if the assessment is due on a Monday, no work may be handed in after Tuesday of the week prior. Students may only submit ONE draft for marking in the two weeks prior to the date of the task.

3

#### COMPLETION OF ASSESSMENT

Assessment tasks must be submitted, or undertaken, on the due date. A zero mark will be awarded for work submitted late or if a student is absent and no exceptional circumstances exist for the late submission or absence.

4

#### WORK PLACEMENT, KNOCKOUT SPORT AND OTHER SCHOOLS ACTIVITIES

If you are completing compulsory work placement you will not be disadvantaged. If there is sufficient time prior to commencing work placement the task can be submitted early. It is your responsibility to notify your teacher and Head Teacher once you are aware that you will be on work placement when the task is due. A new date may be set by the Head Teacher which should be recorded on the "record of issue/collection" form.

If you are involved in knockout sport or other school-based activity, you must notify your teacher and Head Teacher as soon as you are aware of the clash of dates. Permission to attend the knockout game will be at the discretion of the Head Teacher and Head Teacher PDHPE. You may be given the option of completing the task prior to competing in the knockout game or, if it is a research task, you need to arrange for it to be handed in to your teacher on the required day.

5

#### RETURNING OF A MARKED TASK

On the day you receive a marked task back, teachers will provide you with your task and a mark slip which indicates your mark, your rank for that task and your cumulative rank in the course. It is your responsibility **at that time** to:

- Check marks have been correctly added and match the marks on the mark slip
- To ask questions about the marking of a question if you are concerned or confused

6

#### APPEALS

Any complaints about assessment procedure should be made in the first place to the classroom teacher. Further appeals may be made to the Head Teacher of the appropriate faculty and then to the school's review panel.

The request for review must be made within three days of the issue of assessment ranks.

The way marks were awarded by the teacher for assessment tasks will not be subject to review.

The school review panel will consist of the Principal or Deputy Principal, the Head Teacher concerned, and one other Head Teacher.

The Year Adviser may act as student advocate in these cases. A student who is dissatisfied with the school's review procedures may appeal to NESA.

## 4. Absence on the day of Assessment Tasks

1

**Every endeavour should be made to come to school on the day of an Assessment.** However, if you are ill or have a misadventure occur, endeavour to **contact your teacher or the Head Teacher of the faculty by 9am** (through email or a phone call) on the day of task to let them know that you will be absent and the reason for this absence.

2

Obtain a Doctor's Certificate or other documentation to explain your absence. This Doctor's Certificate must be obtained on the day of the task, not in retrospect. If you are also absent in the days after the task, your Doctor's Certificate must cover these absences as well. Medical certificates must be issued by a qualified medical practitioner, preferably your family doctor or specialist. **A medical certificate that merely states you were unfit for work/study is insufficient. Specific reasons must be supplied.**

3

On the morning of your return to school, prior to 9am, you must see the Senior Deputy Principal with your Doctor's Certificate and ask for an Illness/Misadventure Application form. You are then to complete this form in consultation with the Deputy Principal.

4

The Assessment Committee, led by the Deputy Principal, will decide the outcome of your Illness/Misadventure application.

5

You will be required to undertake any missed task in consultation with the Head Teacher of the relevant faculty. The date and time of this task will be determined by the Head Teacher. You will be required to complete this task regardless of the success or otherwise of your Illness/Misadventure Application.

6

The Deputy Principal may, in **exceptional circumstance**, authorise an estimate to be given for a missed task.

7

You may appeal the outcome of your Illness/Misadventure Application following the appeals procedure on page 11 of this booklet

8

If you are ill and your task is a hand-in task, you must email a copy of your task to your class teacher by the due date and time. If this is not possible, you are to contact your classroom teacher by 9am that morning providing reasons for your inability to do so.

9

Computer and technology issues: Students are strongly advised to prepare work that will be handed in using an online program such as Google Docs. Computer and associated technology malfunction, even theft, without evidence of "work in progress" is not a reason for late submission.

## 5. Unsatisfactory Completion of a Course

1

If you fail to satisfy minimum course requirements you will be awarded an 'N' determination. This means you have failed the course and it will not count towards the HSC. (You must complete at least 12 Preliminary units + 10 HSC units.)

2

For a student to satisfactorily complete a course, NESA requires the principal to have sufficient evidence that you have:

- (a) Followed the course developed or endorsed by NESA; *and*
- (b) Applied yourself with diligence and sustained effort to the set tasks and experiences provided in the course by the school; *and*
- (c) Achieved some or all of the course outcomes.

3

To have successfully "*followed the course developed or endorsed by NESA*", you must:

- Have both excellent overall school attendance and subject attendance.
- Complete a significant amount of non-assessable work such as class work, homework, practical work and other learning tasks the teacher has assigned.

4

To have successfully "*applied yourself with diligence and sustained effort to the set tasks and experiences provided in the course by the school*", you must:

- Complete all assessments.
- Make a genuine attempt for all tasks.
- Complete a significant amount of non-assessable work such as class work, homework, practical work and other learning tasks the teacher has assigned.

5

To have successfully "*achieved some or all of the course outcomes*", you must:

- Have demonstrated the capacity to achieve some of the course outcomes through the completion of both formal and informal assessment.
- Have both excellent overall school attendance and subject attendance.

6

- A failure to meet these requirements will see N Warning letters sent to students and their parents/guardians.
- Students will be given every opportunity to correct the problem indicated on the N-Warning Letter. Failure to correct the issue will see at least one follow-up warning letter issued.
- Students who have not complied with the requirements for satisfactory completion of a course at the time of finalising assessments cannot be regarded as having satisfactorily completed the course and a non-completion determination will be issued.

## 6. Disability Provisions

If you suffer from a disability which would, in a normal test situation, prevent you from:

- reading and interpreting the test questions and/or
- communicating knowledge or understanding to an examiner as effectively as a student without a disability,

NESA may approve special test provisions.

If you wish to apply for disability provisions you should do so as soon as possible. Ask the Senior Deputy Principal or School Counsellor about lodging an application with NESA. A new application needs to be lodged with NESA each year for students who have previously been granted disability provisions. Your application should contain recent evidence of your disability and in some cases examples of your work.

Disability provisions are not available:

- as compensation for difficulties in undertaking a course or preparing for the test and/or
- for lack of familiarity with the English language.

The school will endeavour to provide students with their 'time to rest' provisions in a separate small group setting. However, for small cohort groups the 'time to rest' provision may be provided within their own classroom during in-class assessments. During examination periods such as the Trial HSC, students will definitely be provided with small group supervision.

## 7. Serious and Non-Serious Attempts

Students should enter an assessment task or HSC examination knowing they **MUST** make a genuine effort at the task or exam. NESA Rules and Procedures describe the requirements that students make a serious attempt to answer the examination questions – failure to do so is called a non-serious attempt or a non-attempt.

A student's task or exam is considered a non-attempt if there is no evidence of academic engagement with the task or exam. Students are required to attempt a range of question types throughout the examination paper and must satisfactorily attempt all sections. It is not sufficient to answer multiple choice questions only. Merely rewriting the question is not considered to be an adequate attempt at the paper.

A non-serious attempt includes where the students write frivolous or objectionable material in response to the questions. If a student is identified as providing non-serious or non-attempts they will be asked to justify why they should receive a result in the task or course concerned. The consequences may be significant and may include not receiving an award in that course. This may render a student ineligible for the award of the HSC.

## 8. Cheating or Malpractice

The honesty of students in completing assessment tasks, examinations and submitted works, and of teachers and others in guiding students, underpins the integrity of the ROSA, Preliminary HSC and Higher School Certificate. Throughout the assessment process, the highest level of honesty is required.

All work presented in assessment tasks and HSC examinations (including submitted works and practical examinations) must be your own or must be acknowledged appropriately.

**Malpractice, including plagiarism, could limit your marks for the task or examination, and will jeopardise your HSC results.**

Each student's mark will be determined by the quality of the work produced by the student only. To demonstrate honesty, any component of a student's work that has been written, created or developed by others must be acknowledged in accordance with NESA's subject specific documentation. Use or inclusion of material from other sources such as books, journals and electronic sources, including the Internet, must be acknowledged. General teaching and learning do not require formal acknowledgement.

Malpractice is any activity that allows students to gain an unfair advantage over other students. It includes, but is not limited to:

- copying someone else's work in part or in whole, and presenting it as their own
- using material directly from books, journals, CDs or the internet without reference to the source
- building on the ideas of another person without reference to the source
- buying, stealing or borrowing another person's work and presenting it as their own
- submitting work to which another person such as a parent, coach or subject expert has contributed substantially
- using words, ideas, designs or the workmanship of others in practical and performance tasks without appropriate acknowledgement
- paying someone to write or prepare material
- breaching school examination rules
- using non-approved aids during an assessment task
- contriving false explanations to explain work not handed in by the due date, and
- assisting another student to engage in malpractice

Students involved in malpractice in relation to any assessment task will be referred to the Head Teacher of the relevant subject and then the Senior Deputy Principal. They will review each case of malpractice on its merits, considering all the issues, in order to arrive at a fair conclusion and make recommendations to the Principal. Students suspected of malpractice will be required to demonstrate that all unacknowledged work is entirely their own. Detected malpractice will limit a student's marks and jeopardise their HSC. One or more of the following will apply: reduced marks for all or part of the task, zero marks for part or all of the task

Students who do not make a serious attempt at an assessment task can also expect to receive a limited mark for that task.

All students who are found to have engaged in cheating and malpractice will be recorded in NESA's Register of Malpractice, as required by their guidelines.

## 9. Reviews and Appeals

Any complaints about assessment **procedure** (that is, assessment procedure does not comply with the guidelines in this booklet), should be made in writing, to the Head Teacher of the relevant faculty. Further appeals may then be made to the school's Review Panel.

The request for review must be made within three days of the issue of assessment ranks.

Marks awarded by the marker for assessment tasks will not be subject to review by the Review Panel.

The school review panel will consist of the Principal or Deputy Principal, the Head Teacher concerned, and one other Head Teacher.

The Year Adviser may act as student advocate in these cases. A student who is dissatisfied with the school's review procedures may appeal to NESA.

## 10. Information and Advice

### Advice on assessment is available from:

- The Deputy Principal
- The Head Teacher of the faculty concerned
- Your classroom teacher
- The Careers Adviser
- The Year Adviser

### Information is located:

- NESA documents – with the Principal or Deputy Principal
- NESA website – [www.nesa.nsw.edu.au](http://www.nesa.nsw.edu.au)
- Rules and Procedures for Higher School Certificate Candidates - NESA booklet issued to each student
- School Assessment Policy
- HSC Assessment Policy and Procedures – spare copies with the Year Adviser and Deputy Principal and on school website
- Faculty Assessment Program – with the Faculty concerned; copy with the Principal

### Vocational Education and Training (VET):

Students have three opportunities to successfully complete a competency or cluster assessment task.

If a student wishes to appeal a decision they must:

1. first obtain a copy of the Student Assessment Appeal form for VET courses
2. then follow the school review and appeals process.

## 11. Approved Scientific Calculators and Equipment

The scientific calculators in the link below are approved for use in the 2021 Higher School Certificate examinations. The examinations in which scientific calculators are permitted are listed in the equipment checklist.

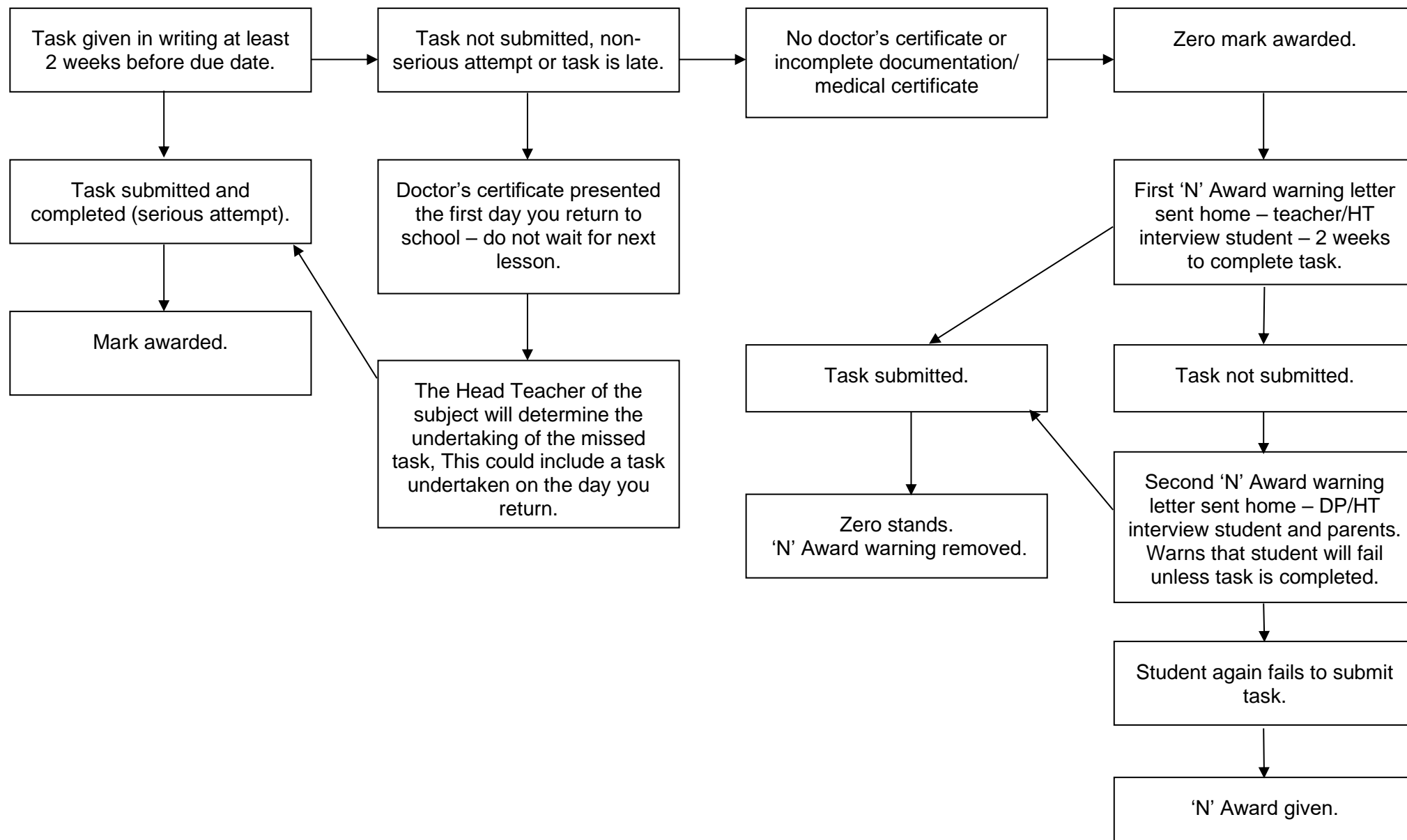
[http://www.boardofstudies.nsw.edu.au/hsc\\_exams/calculators.html](http://www.boardofstudies.nsw.edu.au/hsc_exams/calculators.html)

A full list of the equipment required for each subject in the HSC Exams can be found at this link: [exam equipment list](#).

Instruction booklets or cards (eg reference cards) on the operation of calculators are NOT permitted in the examination room. Candidates are expected to familiarise themselves with the calculator's operation beforehand.

Calculators must have been switched off for entry into the examination room.

## ASSESSMENT TASK FLOW CHART





## GLOSSARY OF KEY WORDS

Syllabus outcomes, objectives, performance bands and examination questions have key words that state what students are expected to be able to do. A glossary of key words has been developed to help provide a common language and consistent meaning in the Higher School Certificate documents.

Using the glossary will help teachers and students understand what is expected in responses to examinations and assessment tasks.

<b>Account</b>	Account for: state reasons for, report on. Give an account of: narrate a series of events or transactions
<b>Analyse</b>	Identify components and the relationship between them; draw out and relate implications
<b>Apply</b>	Use, utilise, employ in a particular situation
<b>Appreciate</b>	Make a judgement about the value of
<b>Assess</b>	Make a judgement of value, quality, outcomes, results or size
<b>Calculate</b>	Ascertain/determine from given facts, figures or information
<b>Clarify</b>	Make clear or plain
<b>Classify</b>	Arrange or include in classes/categories
<b>Compare</b>	Show how things are similar or different
<b>Construct</b>	Make; build; put together items or arguments
<b>Contrast</b>	Show how things are different or opposite
<b>Critically (analyse/evaluate)</b>	Add a degree or level of accuracy depth, knowledge and understanding, logic, questioning, reflection and quality to (analyse/evaluate)
<b>Deduce</b>	Draw conclusions
<b>Define</b>	State meaning and identify essential qualities
<b>Demonstrate</b>	Show by example
<b>Describe</b>	Provide characteristics and features
<b>Discuss</b>	Identify issues and provide points for and/or against
<b>Distinguish</b>	Recognise or note/indicate as being distinct or different from; to note differences between
<b>Evaluate</b>	Make a judgement based on criteria; determine the value of
<b>Examine</b>	Inquire into
<b>Explain</b>	Relate cause and effect; make the relationships between things evident; provide why and/or how
<b>Extract</b>	Choose relevant and/or appropriate details
<b>Extrapolate</b>	Infer from what is known
<b>Identify</b>	Recognise and name
<b>Interpret</b>	Draw meaning from
<b>Investigate</b>	Plan, inquire into and draw conclusions about
<b>Justify</b>	Support an argument or conclusion
<b>Outline</b>	Sketch in general terms; indicate the main features of
<b>Predict</b>	Suggest what may happen based on available information
<b>Propose</b>	Put forward (for example a point of view, idea, argument, suggestion) for consideration or action
<b>Recall</b>	Present remembered ideas, facts or experiences
<b>Recommend</b>	Provide reasons in favour
<b>Recount</b>	Retell a series of events
<b>Summarise</b>	Express, concisely, the relevant details
<b>Synthesise</b>	Putting together various elements to make a whole



## BURWOOD GIRLS HIGH SCHOOL

### ILLNESS, ACCIDENT OR MISADVENTURE APPLICATION

*Example*

STUDENT'S NAME: \_\_\_\_\_

ERN NUMBER: \_\_\_\_\_ YEAR: \_\_\_\_\_ ROLL CALL: \_\_\_\_\_

SUBJECT: \_\_\_\_\_

TEACHER'S NAME: \_\_\_\_\_

NATURE OF ASSESSMENT: \_\_\_\_\_

(Examination, Topic or Unit Test, Assignment, Research Activity, Practical Exercise, Practical Test, Field Work, other.)

DATE OF ORIGINAL TASK: \_\_\_\_\_

DATE TASK WILL BE COMPLETED (HT or HT Admin to re-schedule task) (for Trial & Yearly Exam): \_\_\_\_\_

NATURE OF ABSENCE: \_\_\_\_\_

(State sufficient details to support your case for consideration to sit for task or substitute task or to gain an extension.)

MEDICAL CERTIFICATE FROM: \_\_\_\_\_ (Name of doctor)

OR NATURE OF OTHER VERIFICATION (eg. funeral notice from newspaper etc.)

STUDENT'S SIGNATURE: \_\_\_\_\_ DATE: \_\_\_\_\_

TEACHER'S COMMENT: \_\_\_\_\_

TEACHER'S SIGNATURE: \_\_\_\_\_ DATE: \_\_\_\_\_

HEAD TEACHER'S SIGNATURE: \_\_\_\_\_ DATE: \_\_\_\_\_

ASSESSMENT COMMITTEE'S RECOMMENDATION (if needed):

STUDENT **MUST** RETURN THE **COMPLETED** FORM TO THE DEPUTY PRINCIPAL

DEPUTY PRINCIPAL'S SIGNATURE: \_\_\_\_\_ DATE: \_\_\_\_\_

**OFFICE USE ONLY:**

Copy of form to HT: \_\_\_\_\_ Copy of medical certificate to office for attendance: \_\_\_\_\_

Entered on Sentral and spreadsheet: \_\_\_\_\_



Queen Street  
Croydon NSW 2132

P +61 2 9747 3355  
F +61 2 9744 2797

[burwoodg-h.school@det.nsw.edu.au](mailto:burwoodg-h.school@det.nsw.edu.au)  
<https://burwoodg-h.schools.nsw.gov.au>

## Sample letter: Official Warning of 'N' Determination (HSC)

Dear *Name*

### OFFICIAL WARNING – Non-completion of a Higher School Certificate Course

I am writing to advise you that your son/daughter, *Name*, is in danger of not meeting the requirements for satisfactory completion of the Higher School Certificate course in *Course Name*.

The NSW Education Standards Authority (NESA) requires schools to issue students who are in danger of not meeting course requirements with official warnings in order to give them the opportunity to correct the problem. A minimum of two course-specific warnings must be issued prior to a final non-completion of course determination being made.

This is the *first/second/third* official warning we have issued notifying you that *Student first name* is at risk of not completing the above course. [*Delete the following sentence if this is the first warning*] Previous warning(s) were sent to you on *Insert date*.

### Criteria for satisfactory completion of a course

For a student to satisfactorily complete a course, NESA requires the principal to have sufficient evidence that the student has:

- (a) followed the course developed or endorsed by NESA; and
- (b) applied him/herself with diligence and sustained effort to the set tasks and experiences provided in the course by the school; and
- (c) achieved some or all of the course outcomes.

Where it is determined that a student has not met the course completion requirements, they place themselves at risk of receiving a determination of non-completion of course requirements. This will mean that the course will not be listed on the student's Record of Achievement and may affect the student's eligibility for the Higher School Certificate. In Year 12, students must make a genuine attempt at assessment tasks that contribute in excess of 50% of the available marks. Completion of tasks worthy of exactly 50% is not sufficient; tasks worth in excess of 50% must be completed.

*Student first name* is not currently meeting one or more of these requirements. In particular, he/she *Insert brief description of the problem(s)*.

### Opportunity to correct the problem

The following tasks or requirements need to be completed by *Student first name* to correct the problem.

Task or course requirement	Percentage weighting <i>(if applicable)</i>	Original due date <i>(if applicable)</i>	Action required by student	Date for completion

*Add/delete rows as required*

### Action by parent/guardian

To support *Student first name* in meeting the course requirements, we request that you discuss this matter with him/her, and encourage and support him/her to carry out the required actions. If you have any questions about this matter, please contact *Insert contact details*.

Please complete the acknowledgement below and return it to the school. Please feel free to add additional comments if you wish.

Yours sincerely

\_\_\_\_\_  
Class Teacher/Head Teacher

\_\_\_\_\_  
Principal

-----✂-----✂-----✂-----✂-----✂-----✂-----✂-----✂-----

### *Acknowledgement of Official Warning*

I have received the letter dated *Insert date* advising me that *Insert name* is in danger of not meeting the course completion requirements for *Insert course name*, and am aware that this is the *first/second/third* official warning.

I am aware that any course not satisfactorily completed will not be listed on the student's Record of Achievement and may affect the student's eligibility for the Higher School Certificate.

Parent/Guardian's signature: \_\_\_\_\_ Date: \_\_\_\_\_

Student's signature: \_\_\_\_\_ Date: \_\_\_\_\_

Burwood Girls  
High School

# Subject Information



# Aboriginal Studies

## HSC Course 2021

Component	Task 1	Task 2	Task 3	Task 4	Weighting
	Aboriginality and the Land Source Based Study	Major Project b) Log c) Project	Global Perspectives / Comparative Study	Trial HSC Exam	
	Term 4 Week 8	Term 1 Week 10	Term 2 Week 9	Term 3 Week 4, 5	
<i>Outcomes</i>	H1.1, H2.2, H3.2, H3.3	H4.1 H4.2	H1.2, H1.3, H4.1	H1.1, H1.2, H1.3, H2.1, H2.2, H3.1, H3.2, H3.3	
Knowledge and understanding	5	b) - c) 15	10	10	<b>40</b>
Investigation, Analysis, Synthesis and Evaluation of Information	10	b) - c) 5	5	5	<b>25</b>
Research Inquiry Methods / Aspects of Major Project		b) 15 c) -	5		<b>20</b>
Communication		b) - c) 5	5	5	<b>15</b>
<b>Weighting</b>	<b>15</b>	<b>40</b>	<b>25</b>	<b>20</b>	<b>100</b>

First Draft of your Major Work is due in Week 3 of Term 1.

# Ancient History

## HSC Course 2021

Component	Task 1	Task 2	Task 3	Task 4	Weighting
	<b>Core: Pompeii and Herculaneum</b>	<b>Ancient Societies</b>	<b>Historical Period</b>	<b>Trial HSC Exam</b>	
Nature of assessment	Source Analysis & Structured Responses	Source Analysis & Structured Responses	Research Essay	Examination Core -5% Society – 5% Hist. Period – 5% Personality – 15%	
Estimated time of assessment	Term 4 Week 8	Term 1 Week 10	Term 2 Week 7	Term 3 Week 4 & 5	
Outcomes	12-1, 12-4, 12- 8, 12-10	12-2, 12-3, 12-6, 12-9	12-5, 12-7, 12-8, 12-9	12-1 to 12-10	
Knowledge and understanding	10	10	5	15	<b>40</b>
Source-based skills	5	5		5	<b>15</b>
Historical inquiry and research	5	5	10		<b>20</b>
Communication of historical understanding	5	5	5	10	<b>25</b>
<b>WEIGHTING</b>	<b>25</b>	<b>25</b>	<b>20</b>	<b>30</b>	<b>100</b>

Note: A formative assessment task will be issued and reported on for Personalities in their Times.

# Biology

## HSC Course 2021

Component	Task 1	Task 2	Task 3	Task 4	Weighting
	<b>Topic Test</b> Heredity	<b>Topic Test</b> Genetic Change Infectious Disease	<b>Depth Study Research</b> Infectious Disease Non-infectious Disease	<b>Trial HSC Examination</b>	
	Term 4 Week 9	Term 1 Week 8	Term 2 Week 7	Term 3 Week 4,5	
	<b>Outcomes assessed</b> BIO11/124 BIO11/12-5 BIO11/12-6 BIO12-12	<b>Outcomes assessed</b> BIO11/12-6 BIO11/12-7 BIO12-13 BIO11/12-1 BIO 11/12-2 BIO12-14	<b>Outcomes assessed</b> BIO11/12-3 BIO11/12-4 BIO12-14 BIO11/12-5 BIO11/12-6 BIO11/12-7 BIO 12-15	<b>Outcomes assessed</b> BIO12-12 BIO12-13 BIO12-14 BIO12-15	
Skills in Working Scientifically	10	15	20	15	<b>60</b>
Knowledge and Understanding	10	10	5	15	<b>40</b>
<b>Weighting</b>	<b>20</b>	<b>25</b>	<b>25</b>	<b>30</b>	<b>100</b>



# Business Studies

## HSC Course 2021

Component	Task 1	Task 2	Task 3	Task 4	Weighting
	<b>Marketing</b> Extended Response (in-class)	<b>Finance</b> In-Class Topic Test	<b>Operations</b> Business Report	HSC Trial Exam	
	Term 4 Week 9	Term 1 Week 9	Term 2 Week 9	Term 3 Week 4-5	
	H1, H2, H4, H5, H6	H5, H8, H9, H10	H2,H4, H6, H7,H9	H1-H6, H8,H9, H10	
Knowledge and Understanding of Course Content	10	10	10	10	<b>40</b>
Stimulus-based Skills		5	10	5	<b>20</b>
Inquiry and Research	5	5		10	<b>20</b>
Communication of Business Ideas, Information and Issues in Appropriate Forms	5	5	5	5	<b>20</b>
<b>Weighting</b>	<b>20</b>	<b>25</b>	<b>25</b>	<b>30</b>	<b>100</b>

# Chemistry

## HSC Course 2021

Component	Task 1	Task 2	Task 3	Task 4	Weighting
	Class Test Module 5	Depth Study Practical Task Module 6	Research Task Module 7	Trial HSC Exam	
	Term 4 Week 8	Term 1 Week 6	Term 2 Week 6	Term 3 Week 4,5	
	CH11/12-4 CH11/12-5 CH11/12-6 CH12-12	CH11/12-1 CH11/12-2 CH11/12-3 CH11/12-5 CH11/12-7 CH12-13	CH11/12-4 CH11/12-5 CH11/12-6 CH11/12-7 CH12-14	CH11/12-4 CH11/12-5 CH11/12-6 CH12-12 CH12-13 CH12-14 CH12-15	
Skills in Working Scientifically	10	20	15	15	<b>60</b>
Knowledge and Understanding	10	5	10	15	<b>40</b>
<b>Weighting</b>	<b>20</b>	<b>25</b>	<b>25</b>	<b>30</b>	<b>100</b>

# Chinese Beginners

## HSC Course 2021

Component	Task 1	Task 2	Task 3	Task 4	Weighting
	Listening & Writing In-class task	Speaking, Reading, Writing Hand-in & in-class task	Speaking, Listening & Reading In-class task	Trial HSC Exam	
	Term 4 Week 8	Term 1 Week 5	Term 2 Week 7	Term 3 Week 4-5	
	2.1, 2.2, 2.3, 2.4, 2.5, 2.6 3.1, 3.2, 3.3, 3.4	1.1, 1.2, 1.3, 1.4 2.1, 2.2, 2.3, 2.4, 2.5, 2.6	1.1, 1.2, 1.3, 1.4 2.1, 2.2, 2.3, 2.4, 2.5, 2.6	1.1, 1.2, 1.3, 1.4 2.1, 2.2, 2.3, 2.4, 2.5, 2.6 3.1, 3.2, 3.3, 3.4	
Speaking		5	10	5	<b>20</b>
Listening & Responding	10		10	10	<b>30</b>
Reading & Responding		10	10	10	<b>30</b>
Writing in Chinese	5	10		5	<b>20</b>
<b>Weighting</b>	<b>15</b>	<b>25</b>	<b>30</b>	<b>30</b>	<b>100</b>

# Chinese Continuers

## HSC Course 2021

Component	Task 1	Task 2	Task 3	Task 4	Weighting
	Listening, Reading, Writing In-class task	Speaking, Reading, Writing Hand-in/in- class task	Speaking, Listening, Reading In-class task	Trial HSC Exam	
	Term 4 Week 8	Term 1 Week 5	Term 2 Week 5, 6	Term 3 Week 4-5	
	2.1, 2.2, 2.3 3.1, 3.2, 3.3, 3.4, 3.5, 3.6	1.1, 1.2, 1.3, 1.4 2.1, 2.2, 2.3 3.1, 3.2, 3.3, 3.4, 3.5, 3.6	1.1, 1.2, 1.3, 1.4 2.1, 2.2, 2.3 3.1, 3.2, 3.3, 3.4, 3.5, 3.6	1.1, 1.2, 1.3, 1.4 2.1, 2.2, 2.3 3.1, 3.2, 3.3, 3.4, 3.5, 3.6	
Speaking		10	5	5	<b>20</b>
Listening & Responding	5		15	10	<b>30</b>
Reading & Responding	5	5	10	10	<b>30</b>
Writing in Chinese	10	5		5	<b>20</b>
<b>Weighting</b>	<b>20</b>	<b>20</b>	<b>30</b>	<b>30</b>	<b>100</b>

# Chinese Extension

## HSC Course 2021

Component	Task 1	Task 2	Task 3	Weighting
	Text Analysis, Writing In-class task	Speaking, Writing Hand-in and in class interview	Trial HSC Exam	
	Term 1 Week 5	Term 2 Week 9,10	Term 3 Week 4-5	
	1.1, 1.2 2.1, 2.2, 2.3	1.1, 1.2	1.1, 1.2 2.1, 2.2, 2.3	
Speaking Skills		14	6	<b>20</b>
Text Analysis	28		12	<b>40</b>
Writing Skills	10	18	12	<b>40</b>
<b>Weighting</b>	<b>38</b>	<b>32</b>	<b>30</b>	<b>100</b>

# Chinese and Literature

## HSC Course 2021

Component	Task 1	Task 2	Task 3	Task 4	Weighting
	Listening, Reading In-class task	Speaking, Writing Hand-in & In- class task	Listening, Reading, Writing In-class task	Trial HSC Exam	
	Term 4 Week 7	Term 1 Week 5	Term 2 Week 7	Term 3 Week 4-5	
	3.1, 3.2, 3.3, 3.4, 3.5, 3.6, 3.7, 3.8	1.1, 1.2, 1.3 2.1, 2.2, 2.3, 2.4	2.1, 2.2, 2.3, 2.4 3.1, 3.2, 3.3, 3.4, 3.5, 3.6, 3.7, 3.8	2.1, 2.2, 2.3, 2.4 3.1, 3.2, 3.3, 3.4, 3.5, 3.6, 3.7, 3.8	
Speaking		10			<b>10</b>
Listening	10		5	5	<b>20</b>
Reading	10		15	15	<b>40</b>
Writing in Chinese		15	5	10	<b>30</b>
<b>Weighting</b>	<b>20</b>	<b>25</b>	<b>25</b>	<b>30</b>	<b>100</b>

# Community and Family Studies

## HSC Course 2021

Component	Task 1	Task 2	Task 3	Task 4	Weighting
	Research Methodology (IRP)	Case study of a Community Group	Parenting Essay	Trial HSC Examination	
	Term 4, Week 9	Term 1, Week 7	Term 2, Week 9	Term 3 Week 4,5	
	H4.1, H4.2	H1.1, H2.2, H2.3, H3.1, H3.3, H5.1	H2.1, H2.2, H3.2, H3.4, H5.2, H6.1	H2.3, H3.3, H3.4, H5.2, H6.1, H6.2	
Knowledge and understanding of the course content		15	15	10	<b>40</b>
Skills in critical thinking, research methodology, analysing and communicating	20	10	10	20	<b>60</b>
<b>Weighting</b>	<b>20</b>	<b>25</b>	<b>25</b>	<b>30</b>	<b>100</b>

# Dance

## HSC Course 2021

Components	Task 1	Task 2	Task 3	Task 4	Weighting %
	<b>Presentation of Core Performance Under Development</b> Including process diary, critical analysis and evaluation of performance quality, interpretation and style and submission of safe dance practice journal.	<b>Presentation/ Submission Core Composition And Major Study work in progress.</b> Including process diary containing record of research and analysis of problem solving and decision making specific to concept and intent.	<b>Written Core Appreciation Task</b> ONE extended response question on one of the prescribed artists and their work.	<b>Presentation/ Submission Core Composition And Major Study work in progress.</b> Including process diary containing record of research and analysis of problem solving and decision making specific to concept and intent.	
	Term 4, Week 9	Term 1, Week 10	Term 2, Week 5	Term 2, Week 10	
	H1.1, H2.1, H2.2, H2.3	H1.2, H3.1, H3.2, H3.3 *	H1.3, H4.1, H4.2, H4.4	H1.2, H3.1, H3.2, H3.3 *	
Core Performance	20				20
Core Composition		10		10	20
Appreciation			20		20
Major Study		20		20	40
<b>Total %</b>	<b>20</b>	<b>30</b>	<b>20</b>	<b>30</b>	<b>100</b>

Teachers will select the appropriate outcomes based on the Major Study option selected by each student.



# Design and Technology

## HSC Course 2021

Component	Task 1	Task 2	Task 3	Task 4	Weighting
	Project Proposal Presentation	Innovation and Emerging Technology Case Study*	Project Development and Management Report	Trial HSC Exam	
	Term 4 Week 6  Term 4 Week 9	Term 1 Week 7	Term 2 Week 8	Term 3 Week 4,5	
	H2.1, H4.1, H4.2	H2.2, H3.1, H3.2, H6.2	H4.3, H5.1, H5.2, H6.1	H1.1, H1.2, H2.1, H2.2, H3.1, H6.2	
Knowledge and understanding of course content		20		20	<b>40</b>
Knowledge and skills in designing, managing, producing and evaluating a major design project	30		20	10	<b>60</b>
<b>Weighting</b>	<b>30</b>	<b>20</b>	<b>20</b>	<b>30</b>	<b>100</b>

**Design & Technology Major Projects completion and hand in date in August 2021 - TBA.**

**BOW Exhibition – Design & Technology – is in Term 3, Week 3.**

# Earth and Environmental Science

## HSC Course 2021

Component	Task 1	Task 2	Task 3	Task 4	Weighting
	<b>Topic Test</b> Earth's Processes	<b>Topic test</b> Hazards	<b>Depth Study Presentation</b> Climate Science	<b>Trial Examination</b>	
	Term 4, Week 9	Term 1, Week 8	Term 2, Week 8	Term 3, Week 4-5	
	EES11/12-4, EES11/12-5, EES11/12-6, EES11/12-7, EES12-12	EES11/12-4 EES11/12-5 EES11/12-6 EES11/12-7 EES12-13	EES11/12-1 EES 11/12-5 EES11/12-6 EES11/12-7 EES12-14	EES11/12-1 EES11/12-2 EES11/12-4 EES11/12-5 EES11/12-6 EES11/12-7 EES11-12 EES11-13 EES11-14 EES11-15	
Skills in Working Scientifically	10	15	20	15	<b>60</b>
Knowledge and Understanding	10	10	5	15	<b>40</b>
<b>Weighting</b>	<b>20</b>	<b>25</b>	<b>25</b>	<b>30</b>	<b>100</b>

# Economics

## HSC Course 2021

Component	Task 1	Task 2	Task 3	Task 4	Weighting
	Topic 1: The Global Economy Extended Response	Topic 1, 2: The Global Economy, Australia in the Global Economy Topic Test	Topic 3: Economic Issues/ Management Extended Response	Trial HSC Exam	
	Term 4 Week 9	Term 1 Week 8	Term 2 Week 10	Term 3 Week 4,5	
	H1, H3, H4, H10	H1, H3, H4, H8, H11	H2, H5, H7, H9,	H2, H5, H6, H9, H11	
Knowledge and understanding of course content	5	10	10	15	<b>40</b>
Stimulus based skills		10		10	<b>20</b>
Inquiry and research	10		10		<b>20</b>
Communication of economic information, ideas and issues in appropriate forms	10		5	5	<b>20</b>
<b>Weighting</b>	<b>25</b>	<b>20</b>	<b>25</b>	<b>30</b>	<b>100</b>

# English Advanced

## HSC Course 2021

Task number	Task 1	Task 2	Task 3	Task 4	Weighting
	<b>Multimodal text using prescribed text and related material</b>  Common Module: Texts and Human Experiences	<b>Comparative essay</b>  Module A: Textual Conversations	<b>Discursive and Reflection Task</b>  Module C: Craft of Writing	<b>Trial HSC Examination</b>  Common Module Module A Module B	
	Term 4 Week 10	Term 1 Week 10	Term 2 Week 8	Term 3 Weeks 4–5	
	EA12-1, EA12-2, EA12-3, EA 12-4, EA12-5, EA12-6, EA12-7	EA12-3, EA12-5, EA12-6, EA12-7, EA12-8	EA12-1, EA12-4, EA12-5, EA12-9, EA12-7	EA12-1, EA12-5, EA12-6, EA12-8, EA12-9	
Knowledge and understanding of course content	10	15	10	15	<b>50</b>
Skills in responding to texts and communication of ideas appropriate to audience, purpose and context across all modes	10	10	15	15	<b>50</b>
<b>Total %</b>	<b>20</b>	<b>25</b>	<b>25</b>	<b>30</b>	<b>100</b>

# English as an Additional Language/Dialect (EAL/D)

## HSC Course 2021

Task number	Task 1	Task 2	Task 3	Task 4	Weighting
	<b>Multimodal Presentation</b>  Module A Texts and Human Experiences	<b>Extended Response</b>  Module B: Language, Identity and Culture	<b>Viewing and Responding Task</b>  Module C: Close Study of Text	<b>Trial HSC Examination</b>  Module D Listening Paper	
	Term 4 Week 10	Term 1 Week 10	Term 2 Week 10	Term 3 Weeks 4 - 5	
	EAL 12-1A, 2, 6, 9	EAL 12 – 1A, 7, 8, 9	EAL 12 – 1A, 3, 4, 5	EAL 12 – 1B, 2, 3, 4	
Knowledge and understanding of course content	10	10	15	15	<b>50</b>
Skills in responding to texts and communication of ideas appropriate to audience, purpose and context across the modes	15	10	10	15	<b>50</b>
<b>Total %</b>	<b>25</b>	<b>20</b>	<b>25</b>	30	<b>100</b>

# English Extension 1

## HSC Course 2021

Task number	Task 1	Task 2	Task 3	Weighting
	<b>Imaginative response and reflection</b>  Common Module: Literary Worlds	<b>Multimodal response incorporating related text</b>  Elective: Literary Homelands	<b>Trial HSC Examination</b>  Common Module: Literary Worlds Elective: Literary Homelands	
	Term 1 Week 5	Term 2 Week 9	Term 3 Weeks 4-5	
	EE12-2, EE12-4, EE12-5	EE12-1, EE12-2, EE12-3, EE12-4	EE12-2, EE12-3, EE12-4, EE12-5	
Knowledge and understanding of texts and why they are valued	15	20	15	<b>50</b>
Skills in complex analysis composition and investigation	15	20	15	<b>50</b>
<b>Total %</b>	<b>30</b>	<b>40</b>	<b>30</b>	<b>100</b>

# English Extension 2

## HSC Course 2021

Task number	Task 1	Task 2	Task 3	Weighting %
	<b>Viva Voce Including written proposal</b>	<b>Literature Review</b>	<b>Critique of the creative process</b>	
	Term 1, Week 4	Term 2, Week 1	Term 2, Week 10	
	EEX12-1, EEX12-4, EEX12-5	EEX12-1, EEX12-2, EEX12-3, EEX12-4	EEX12-2, EEX12-3, EEX12-5	
Knowledge and understanding of texts and why they are valued	15	20	15	<b>50</b>
Skills in complex analysis composition and investigation	15	20	15	<b>50</b>
<b>Total %</b>	<b>30</b>	<b>40</b>	<b>30</b>	<b>100</b>

# English Standard

## HSC Course 2021

Task number	Task 1	Task 2	Task 3	Task 4	Weighting %
	<b>Multimodal text using prescribed text and related material</b>  Common Module: Texts and Human Experiences	<b>Analytical essay</b>  Module A: Language, Identity and Culture	<b>Imaginative and Reflection task</b>  Module C: Craft of Writing	<b>Trial HSC Examination</b>  Common Module Module A Module B	
	Term 4, Week 10	Term 1, Week 8	Term 2, Week 8	Term 3, Weeks 4–5	
	EN12-1, EN12-2, EN12-3, EN12-4, EN12-6, EN12-7	EN12-1, EN12-3, EN12-5, EN12-7, EN12-8	EN12-1, EN12-2, EN12-3, EN12-4, EN12-5, EN12-9	EN12-1, EN12-3, EN12-4, EN12-5, EN12-6, EN12-7	
Knowledge and understanding of course content	10	15	10	15	<b>50</b>
Skills in responding to texts and communication of ideas appropriate to audience, purpose and context across all modes	10	10	15	15	<b>50</b>
<b>Total %</b>	<b>20</b>	<b>25</b>	<b>25</b>	<b>30</b>	<b>100</b>



# English Studies

## HSC Course 2021

Task number	Task 1	Task 2	Task 3	Task 4	Weighting
	<b>Multimodal presentation with related material</b>  Mandatory module: Texts and Human Experiences	<b>Research task</b>  Elective module: We are Australians	<b>Collection of classwork</b>  All modules	<b>Trial HSC Examination</b>  Mandatory module and Elective – A Part of a Family	
	Term 4 Week 10	Term 1 Week 9	Term 2 Week 10	Term 3 Week 3	
	ES12-1, ES12-4, ES12-5, ES12-6, ES12-8	ES12-3, ES12-5, ES12-7, ES12-8, ES12-9	ES12-1, ES12-4, ES12-5, ES12-7, ES12-10	ES12-2, ES12-3, ES12-4, ES12-5, ES12-9	
Knowledge and understanding of course content	15	10	15	10	<b>50</b>
Skills in: <ul style="list-style-type: none"> <li>comprehending texts</li> <li>communicating ideas</li> <li>using language accurately, appropriately and effectively</li> </ul>	10	15	15	10	<b>50</b>
<b>Total %</b>	<b>25</b>	<b>25</b>	<b>30</b>	<b>20</b>	<b>100</b>

**ENTERTAINMENT INDUSTRY**  
**CUA30415 Certificate III in Live Production Services**  
**180 indicative hours- VET Course**

**HSC COURSE 2021**

VET courses allow students to gain both HSC or RoSA qualifications and a qualification recognised throughout Australia as part of the Australian Qualification Framework (AQF). These qualifications are widely recognised by industry, employers and tertiary training providers and universities, and will assist students to move to various education and training sectors and employment.

**Vocational Education courses involve:**

**Dual accreditation** – the curriculum framework includes courses which are accredited for the HSC (4 Preliminary and/or HSC units in total) and provides students with the opportunity to obtain nationally recognised vocational qualifications (**CUA30415 Certificate III in Live Production Services**).

**Work placement** – a mandatory component of VET courses is 70 hours of structured work placement. 35 hours of work placement must be completed externally and 35 hours of work placement must be completed internally. Students must complete all work placement hours to be awarded the HSC credential.

**Practical work** – approximately 1/3 of the course work involves practical experiences undertaken in the classroom and in an industry setting. It is important that students are prepared for each lesson and are vigilant in their attendance so that all requirements are met.

**Method of Assessment**

Entertainment assessment in Years 11 and 12 is **competency based** with continual and ongoing assessment throughout the year.



This means that a student is assessed on their performance of knowledge or skills, which is required by **industry standards**.

Competency based assessment is largely activity-based and practical. However, competency also implies that an individual displays an understanding of the knowledge, which underpins the practical performance.

A student is deemed competent when they:

- carry out the task to an acceptable industry standard
- organise and manage a range of different tasks
- respond appropriately to a breakdown in routine
- apply existing knowledge and skills to new situations
- use communication and interpersonal skills that suit the work environment.

Students have the opportunity to attempt a task a reasonable number of times in order to fulfil the requirements of a competency. Students may need to arrange a suitable time outside of normal class time to complete competency tasks.

 <b>ULTIMO 90072 ENTERTAINMENT INDUSTRY ASSESSMENT SCHEDULE</b> <b>Preliminary Year 2019 - HSC 2021</b> <b>Education</b>							<b>NESA code</b> 2 U X 2 YR - 26401 <b>LMBR UI Code:</b> 11CUA30415226401B
TERM	Unit Code	Units Of Competency	AQF CORE / ELECTIVE	HSC STATUS	HSC INDICATIV E Hrs.	Assessment Task Cluster & Methods of Assessment	HSC requirements Exam estimate mark & weighting to total 100%
Term 4	<b>6 HSC UOCs</b>						
	SITXCCS303 CUAVSS302 CUAIND301	Provide services to customers Operate vision systems Work effectively in the creative arts industry	C E C	M M M	20 25 20	<b>Cluster C – Let’s See It!</b> Written Questioning, Direct Observation of Practical Work and Evaluation, Portfolio of Evidence and Research Task	35 hrs Work placement  60% Trial HSC Exam
	CUASOU306 CUASTA301 CUALGT301	Operate sound reinforcement systems Assist with production operations for live performances Operate basic lighting	E E E	E M M	20 25 25	<b>Cluster D – Setting the Scene</b> Written Questioning, Direct Observation of Practical Work, Portfolio of Evidence	The final estimate exam mark will only be used as the HSC exam mark in the event of misadventure. This mark should be derived from two exams.
Term 6	CUASTA202 CUASMT301 BSBCMM201	Assist with bump in and bump out of shows Work effectively backstage during performances Communicate in the workplace	E E E	E E E	20 25 15	<b>Cluster E – Behind the Scenes</b> Written Questioning, Portfolio of Evidence, Direct Observation of Practical Work	
NESA requires students to study a minimum of 240 hours to meet Preliminary and HSC requirements.			Total Hours 245			Units of competency from the HSC focus areas will be included in the optional HSC examination.	
 <b>ENTERTAINMENT INDUSTRY SPECIALISATION STUDY (60 Indicative hours) ASSESSMENT SCHEDULE</b> <b>Preliminary Year 2019 or HSC 2021</b> <b>Education</b>							<b>NESA code</b> 1 U X 1 YR - 26403 <b>LMBR UI Code:</b> 11CUA30415226403B
TERM	Unit Code	Units Of Competency	AQF CORE / ELECTIVE	HSC STATUS	HSC INDICATIV E Hrs.	Assessment Task Cluster & Methods of Assessment	HSC requirements Exam estimate mark & weighting to total 100%
Term 6/7	<b>3 HSC UOCs</b>						<b>Students enrolled in the 60 hour specialisation course must also be enrolled in the 240 hour course. No additional work placement is required.</b>
	BSBWOR301	Organise personal work priorities and development	C	E	20	<b>Cluster F: The Event</b>  Practical Observation, Son Et Lumière, Written Questioning, Evaluations and Portfolio	
	CUAPPR304	Participate in collaborative creative projects	C	E	20		
	CUALGT304	Install and operate follow spots	E	E	20		
NESA requires students to study a minimum of 60 hours to meet HSC requirements.			Total Hours 60			No Units of Competency from the 60 hour specialisation study are examinable in the HSC exam. The HSC examination will be based on the 240 hour course only.	

ULTIMO 90072 ENTERTAINMENT INDUSTRY SPECIALISATION STUDY (60 Indicative hours) ASSESSMENT SCHEDULE Preliminary Year 2021 or HSC 2021 QUALIFICATION: Statement of Attainment towards CUA30415 Certificate III in Live Production and Services Training Package: CUA Creative Arts and Culture (version 4)							NESA code 1 U X 1 YR - 26403 LMBR UI Code: (12) CUA30415226403B
TERM	Unit Code	Units Of Competency	AQF CORE / ELECTIVE	HSC STATUS	HSC INDICATIVE Hrs.	Assessment Task Cluster & Methods of Assessment	HSC requirements
Term 6/7	3 HSC UOCs						<b>Students enrolled in the 60 hour specialisation course must also be enrolled in the 240 hour course.</b> The HSC examination is based on content from the 240 hour course  <i>No additional work placement is required.</i>
	BSBWOR301	Organise personal work priorities and development	C	E	20	<b>Cluster F: The Event</b>  Practical Observation, Son Et Lumière, Written Questioning, Evaluations and Portfolio	
	CUAPPR304	Participate in collaborative creative projects	C	E	20		
	CUALGT304	Install and operate follow spots	E	E	20		
NESA requires students to study a minimum of 60 hours to meet HSC requirements.			Total Hours 60		No Units of Competency from the 60 hour specialisation study are examinable in the HSC exam. The HSC examination will be based on the 240 hour course only.		

# French Beginners

## HSC Course 2021

Component	Task 1	Task 2	Task 3	Task 4	Weighting
	Listening & Writing In-class task	Speaking, Reading, Writing Hand-in & in-class task	Speaking, Listening & Reading In-class task	Trial HSC Exam	
	Term 4 Week 8	Term 1 Week 5	Term 2 Week 7	Term 3 Week 4-5	
	2.1, 2.2, 2.3, 2.4, 2.5, 2.6 3.1, 3.2, 3.3, 3.4	1.1, 1.2, 1.3, 1.4 2.1, 2.2, 2.3, 2.4, 2.5, 2.6	1.1, 1.2, 1.3, 1.4 2.1, 2.2, 2.3, 2.4, 2.5, 2.6	1.1, 1.2, 1.3, 1.4 2.1, 2.2, 2.3, 2.4, 2.5, 2.6 3.1, 3.2, 3.3, 3.4	
Speaking		5	10	5	<b>20</b>
Listening & Responding	10		10	10	<b>30</b>
Reading & Responding		10	10	10	<b>30</b>
Writing in French	5	10		5	<b>20</b>
<b>Weighting</b>	<b>15</b>	<b>25</b>	<b>30</b>	<b>30</b>	<b>100</b>

# French Continuers

## HSC Course 2021

Component	Task 1	Task 2	Task 3	Task 4	Weighting
	Listening, Reading, Writing In-class task	Speaking, Reading, Writing Hand-in/in- class task	Speaking, Listening, Reading In-class task	Trial HSC Exam	
	Term 4 Week 8	Term 1 Week 5	Term 2 Week 5, 6	Term 3 Week 4-5	
	2.1, 2.2, 2.3 3.1, 3.2, 3.3, 3.4, 3.5, 3.6	1.1, 1.2, 1.3, 1.4 2.1, 2.2, 2.3 3.1, 3.2, 3.3, 3.4, 3.5, 3.6	1.1, 1.2, 1.3, 1.4 2.1, 2.2, 2.3 3.1, 3.2, 3.3, 3.4, 3.5, 3.6	1.1, 1.2, 1.3, 1.4 2.1, 2.2, 2.3 3.1, 3.2, 3.3, 3.4, 3.5, 3.6	
Speaking		10	5	5	<b>20</b>
Listening & Responding	5		15	10	<b>30</b>
Reading & Responding	5	5	10	10	<b>30</b>
Writing in French	10	5		5	<b>20</b>
<b>Weighting</b>	<b>20</b>	<b>20</b>	<b>30</b>	<b>30</b>	<b>100</b>

# French Extension

## HSC Course 2021

Component	Task 1	Task 2	Task 3	Weighting
	Text Analysis, Writing In-class task	Speaking, Writing Hand-in and in class interview	Trial HSC Exam	
	Term 1 Week 5	Term 2 Week 9,10	Term 3 Week 4-5	
	1.1, 1.2 2.1, 2.2, 2.3	1.1, 1.2	1.1, 1.2 2.1, 2.2, 2.3	
Speaking Skills		14	6	<b>20</b>
Text Analysis	28		12	<b>40</b>
Writing Skills	10	18	12	<b>40</b>
<b>Weighting</b>	<b>38</b>	<b>32</b>	<b>30</b>	<b>100</b>

# Geography

## HSC Course 2021

Component	Task 1	Task 2	Task 3	Task 4	Weighting
	<b>Ecosystems at Risk</b> Topic Test	<b>Urban Places</b> Essay	<b>People and Economic Activity</b> Essay	<b>Trial HSC</b>	
	Term 4 Week 9	Term 1 Week 9	Term 2 Week 9	Term 3 Weeks 4-5	
	H1,H2,H5, H6,H8-H12	H1,H3,H10, H12,H13	H1,H4,H7, H10,H12, H13	H1-6, H11,H12	
Knowledge and Understanding	10	10	10	10	<b>40</b>
Geographical tools and skills	5		5	10	<b>20</b>
Geographical inquiry and research, including fieldwork	5	5	10		<b>20</b>
Communication of geographical information	5	5		10	<b>20</b>
<b>Weighting</b>	<b>25</b>	<b>20</b>	<b>25</b>	<b>30</b>	<b>100</b>



# History Extension

## HSC Course 2021

Component	Task 1	Formative Task	Task 2	Task 3	Weighting %
	History Interest Project Proposal	Constructing History Essay	History Interest Project	Trial HSC	
	Term 4 Week 9	Term 1 Week 8	Term 2 Week 10	Term 3 Weeks 4-5	
	E1.1, E2.1, E2.2	E1.1, E2.2, E2.3,	E.1.1, E2.1, E2.2, E2.3	E1.1, E2.2, E2.3	
Knowledge and understanding of significant historical ideas and processes				15	15
Skills in designing, undertaking and communicating historical inquiry – the History project	5		30		35
<b>Weighting</b>	<b>5</b>	<b>-</b>	<b>30</b>	<b>15</b>	<b>50</b>

# HOSPITALITY - FOOD AND BEVERAGE

SIT20316 Certificate II in Hospitality  
120 indicative hours – VET Course

HSC Course 2021

VET courses allow students to gain both HSC or RoSA qualifications and a qualification recognised throughout Australia as part of the Australian Qualification Framework (AQF). These qualifications are widely recognised by industry, employers and tertiary training providers and universities, and will assist students to move to various education and training sectors and employment.

## **Vocational Education courses involve:**

**Dual accreditation** – the curriculum framework includes courses which are accredited for the HSC (4 Preliminary and/or HSC units in total) and provides students with the opportunity to obtain nationally recognised vocational qualifications (SIT20316 Certificate II in Hospitality).

**Work placement** – a mandatory component of VET courses is 70 hours of structured work placement. 35 hours of work placement must be completed in Year 11 and 35 hours of work placement must be completed in Year 12. Students must complete all work placement hours to be awarded the HSC credential.

**Practical work** – approximately 1/3 of the course work involves practical experiences undertaken in the classroom and in an industry setting. It is important that students are prepared for each lesson and are vigilant in their attendance so that all requirements are met.

## **Method of Assessment**

Hospitality assessment in Years 11 and 12 is **competency based** with continual and ongoing assessment throughout the year.

This means that a student is assessed on their performance of knowledge or skills, which is required by **industry standards**.

Competency based assessment is largely activity-based and practical. However, competency also implies that an individual displays an understanding of the knowledge, which underpins the practical performance.

A student is deemed competent when they:

- carry out the task to an acceptable industry standard
- organise and manage a range of different tasks
- respond appropriately to a breakdown in routine
- apply existing knowledge and skills to new situations
- use communication and interpersonal skills that suit the work environment.

Students have the opportunity to attempt a task a reasonable number of times in order to fulfil the requirements of a competency. Students may need to arrange a suitable time outside of normal class time to complete competency tasks. Students will be required to purchase their own ingredients for any make-up practical lessons, if necessary.



**ULTIMO 90072**  
**HOSPITALITY- FOOD AND BEVERAGE CATEGORY B BOARD DEVELOPED COURSE ASSESSMENT SCHEDULE**  
**Preliminary Year 2021 - HSC 2021**  
**QUALIFICATION: SIT20316 Certificate II in Hospitality**  
**Training Package: SIT Tourism, Travel and Hospitality (Release 1.2)**

**NESA Course Code**  
**2 U X 2 YR – 26511**  
**2021 HSC Exam: 26589**  
**LMBR UI Code**  
**(11 OR 12)**  
**SIT20316126511B**

Term	Unit Code	Units of Competency	AQF CORE / ELECTIVE	HSC STATUS	HSC INDICATIVE Hrs.	Assessment Task Cluster & Method of Assessment	HSC requirements Exam estimate mark & weighting to total 100%
<b>9 PRELIMINARY UOCs</b>						<b>Evidence will be collected during the Preliminary and HSC Course for the Unit of Competency:</b> <b>SITHIND003 Use hospitality skills effectively</b>	240 Indicative Hours over 2 years
Term 1	SITXFSA001 SITXWHS001 SITHCCC003	Use hygienic practices for food safety Participate in safe work practices Prepare and present sandwiches	E C E	M M E	10 15 10	<b>Cluster A: Getting Ready for Work (as a Sandwich Artist)</b> Scenario, written task, case study, observation of practical work	35 hrs Work placement
Term 2 & 3	SITXFSA002 SITHCCC002 BSBSUS201	Participate in safe food handling practices Prepare and present simple dishes Participate in environmentally sustainable work practices	E E E	E E E	15 20 15	<b>Cluster B: Sustainable Kitchen Practices</b> Scenario, written task, case study, observation of practical work	40% Prelim Yearly Exam
Term 3	SITHFAB004 SITXCOM002 SITXCOM001	Prepare and serve non-alcoholic beverages Show social and cultural sensitivity Source and present information	E C E	S E E	15 10 10	<b>Cluster C: Working Relationships</b> Scenario, written task, case study, role play, observation of practical work. NOTE: person with THREE years' Industry Experience must be involved in assessment.	35 hrs Work placement
<b>6 HSC UOCs</b>							<b>60% HSC Trial Exam</b>
Term 4 – 6	SITXCCS003 SITHFAB005 SITHFAB007 SITHIND003	Interact with customers Prepare and serve espresso coffee Serve food and beverage Use hospitality skills effectively	C E E C	S S S E	15 15 40 20	<b>Cluster D: Café Culture</b> Role play, written questioning, observation of practical work, student reflection, portfolio of evidence NOTE: person with THREE years' Industry Experience must be involved in assessment.	The final estimate exam mark will only be used as the HSC exam mark in the event of misadventure.
Term 7	BSBWOR203 SITHIND002	Work effectively with others Source and use information on the hospitality industry	C C	M M	15 20	<b>Cluster E: Working in the Hospitality Industry</b> Written questioning, student reflection	This mark should be derived from two exams.
NESA requires students to study a minimum of 240 hours to meet Preliminary and HSC requirements.			Total Hours 245			Units of competency from the HSC focus areas will be included in the optional HSC examination.	

# Indonesian Continuers

## HSC Course 2021

Component	Task 1	Task 2	Task 3	Task 4	Weighting
	Speaking, Listening, Reading In-class task & interview	Reading In-class task	Speaking, Listening, Writing In-class task	Trial HSC Exam	
	Term 4 Week 8	Term 1 Week 5	Term 2 Week 6	Term 3 Week 4-5	
	1.1, 1.2, 1.3, 1.4 3.1, 3.2, 3.3, 3.4, 3.5, 3.6	3.1, 3.2, 3.3, 3.4, 3.5, 3.6	1.1, 1.2, 1.3, 1.4 2.1, 2.2, 2.3 3.1, 3.2, 3.3, 3.4, 3.5, 3.6	1.1, 1.2, 1.3, 1.4 2.1, 2.2, 2.3 3.1, 3.2, 3.3, 3.4, 3.5, 3.6	
Speaking	10		5	5	<b>20</b>
Listening & Responding	10		10	10	<b>30</b>
Reading & Responding	5	15		10	<b>30</b>
Writing in Indonesian			15	5	<b>20</b>
<b>Weighting</b>	<b>25</b>	<b>15</b>	<b>30</b>	<b>30</b>	<b>100</b>

# Indonesian Extension

## HSC Course 2021

Component	Task 1	Task 2	Task 3	Weighting
	Text Analysis, Writing In-class task	Speaking, Writing Hand-in and in class interview	Trial HSC Exam	
	Term 1 Week 5	Term 2 Week 9,10	Term 3 Week 4-5	
	1.1, 1.2 2.1, 2.2, 2.3	1.1, 1.2	1.1, 1.2 2.1, 2.2, 2.3	
Speaking Skills		14	6	20
Text Analysis	28		12	40
Writing Skills	10	18	12	40
<b>Weighting</b>	<b>38</b>	<b>32</b>	<b>30</b>	<b>100</b>

# Information and Digital Media (VET)

## HSC Course 2021

VET courses allow students to gain both HSC or RoSA qualifications and a qualification recognised throughout Australia as part of the Australian Qualification Framework (AQF). These qualifications are widely recognised by industry, employers and tertiary training providers and universities, and will assist students to move to various education and training sectors and employment.

### Vocational Education courses involve:

**Dual accreditation** – the curriculum framework includes courses which are accredited for the HSC (4 Preliminary and/or HSC units in total) and provides students with the opportunity to obtain nationally recognised vocational qualifications (SIT20316 Certificate II in Hospitality).

**Work placement** – a mandatory component of VET courses is 70 hours of structured work placement. 35 hours of work placement must be completed in Year 11 and 35 hours of work placement must be completed in Year 12. Students must complete all work placement hours to be awarded the HSC credential.

**Practical work** – approximately 1/3 of the course work involves practical experiences undertaken in the classroom and in an industry setting. It is important that students are prepared for each lesson and are vigilant in their attendance so that all requirements are met.

### Method of Assessment

Hospitality assessment in Years 11 and 12 is **competency based** with continual and ongoing assessment throughout the year.

This means that a student is assessed on their performance of knowledge or skills, which is required by **industry standards**.

Competency based assessment is largely activity-based and practical. However, competency also implies that an individual displays an understanding of the knowledge, which underpins the practical performance.

A student is deemed competent when they:

- carry out the task to an acceptable industry standard
- organise and manage a range of different tasks
- respond appropriately to a breakdown in routine
- apply existing knowledge and skills to new situations
- use communication and interpersonal skills that suit the work environment.

Students have the opportunity to attempt a task a reasonable number of times in order to fulfil the requirements of a competency. Students may need to arrange a suitable time outside of normal class time to complete competency tasks. Students will be required to purchase their own ingredients for any make-up practical lessons, if necessary.



**Education**

ULTIMO 90072

**INFORMATION and DIGITAL TECHNOLOGY – WEB AND SOFTWARE APPLICATIONS STREAM**

**CATEGORY B BOARD DEVELOPED COURSE ASSESSMENT SCHEDULE**

**Preliminary Year 2021 - HSC 2021**

QUALIFICATION: Statement of Attainment towards ICT30118 Certificate III in Information, Digital Media and Technology

Training Package: ICT Information and Communications Technology (version 5)

**NESA course code**

**2 U X 2 YR - 27301**

**HSC Exam No. 27389**

**LMBR UI Code**

**(11 OR 12)**

**ICT30118127301B**

TERM	Unit Code	Units Of Competency	AQF CORE / ELECTIVE	HSC STATUS	HSC INDICATIVE Hrs.	Assessment Task Cluster & Methods of Assessment	HSC requirements - Exam estimate mark & weighting to total 100%
Term 1	6 PRELIMINARY UOCs						240 Indicative Hours over 2 years
	BSBWHS304	Participate effectively in WHS communication and consultation processes	C	M	20	Cluster A: Working Safely with others Research, report and presentation	35 hrs Work placement
	BSBSUS401	Implement and monitor environmentally sustainable work practices	C	E	25		0% Preliminary Exam
Term 2	ICTICT302 ICTSAS308	Install and optimise operating system software Run standard diagnostic tests	C C	M M	20 10	Cluster B: Systems & Software Scenario, Observation, portfolio of evidence	35 hrs Work placement
Term 3	ICTICT202	Work and communicate effectively in an ICT environment	C E	M S	25 20	Cluster C: Operate Software packages effectively Oral questioning, Written	
	ICTICT203	Operate application software packages					
Term 4 & Term 5	5 HSC UOCs						100% Trial HSC Exam
	ICTICT308	Use advanced features of computer applications	E	S	30	Cluster D :Computer Applications Written , portfolio of evidence	
Term 5	ICTWEB303 ICTICT301	Produce digital images for the web Create user documentation	E C	E E	20 20	Cluster E: Working on the Web Observation and questioning	The final estimate exam mark will only be used as the optional HSC exam mark in the event of misadventure. This mark should be derived from either one or two formal exams. The calculation of the estimate is a school decision.
	Term 6	ICTWEB302	Build simple websites using commercial programs	E	S	30	
Term 7	ICTWEB201	Use social media tools for collaboration and engagement	E	E	15	Cluster G: Using Social Media Written report	
NESA requires students to study a minimum of 240 hours to meet Preliminary and HSC requirements.			Total hours 240			Units of competency from the HSC focus areas will be included in the optional HSC examination.	

# Italian Continuers

## HSC Course 2021

Component	Task 1	Task 2	Task 3	Task 4	Weighting
	Listening, Reading, Writing In-class task	Speaking, Reading, Writing Hand-in/in class task	Speaking, Listening, Reading In-class task	Trial HSC Exam	
	Term 4 Week 8	Term 1 Week 5	Term 2 Week 5, 6	Term 3 Week 4-5	
	2.1, 2.2, 2.3 3.1, 3.2, 3.3, 3.4, 3.5, 3.6	1.1, 1.2, 1.3, 1.4 2.1, 2.2, 2.3 3.1, 3.2, 3.3, 3.4, 3.5, 3.6	1.1, 1.2, 1.3, 1.4 2.1, 2.2, 2.3 3.1, 3.2, 3.3, 3.4, 3.5, 3.6	1.1, 1.2, 1.3, 1.4 2.1, 2.2, 2.3 3.1, 3.2, 3.3, 3.4, 3.5, 3.6	
Speaking		10	5	5	<b>20</b>
Listening & Responding	5		15	10	<b>30</b>
Reading & Responding	5	5	10	10	<b>30</b>
Writing in Italian	10	5		5	<b>20</b>
<b>Weighting</b>	<b>20</b>	<b>20</b>	<b>30</b>	<b>30</b>	<b>100</b>



# Japanese Beginners

## HSC Course 2021

Component	Task 1	Task 2	Task 3	Task 4	Weighting
	Listening & Writing In-class task	Speaking, Reading, Writing Hand-in & in-class task	Speaking, Listening & Reading In-class task	Trial HSC Exam	
	Term 4 Week 8	Term 1 Week 5	Term 2 Week 7	Term 3 Week 4-5	
	2.1, 2.2, 2.3, 2.4, 2.5, 2.6 3.1, 3.2, 3.3, 3.4	1.1, 1.2, 1.3, 1.4 2.1, 2.2, 2.3, 2.4, 2.5, 2.6	1.1, 1.2, 1.3, 1.4 2.1, 2.2, 2.3, 2.4, 2.5, 2.6	1.1, 1.2, 1.3, 1.4 2.1, 2.2, 2.3, 2.4, 2.5, 2.6 3.1, 3.2, 3.3, 3.4	
Speaking		5	10	5	<b>20</b>
Listening & Responding	10		10	10	<b>30</b>
Reading & Responding		10	10	10	<b>30</b>
Writing in Japanese	5	10		5	<b>20</b>
<b>Weighting</b>	<b>15</b>	<b>25</b>	<b>30</b>	<b>30</b>	<b>100</b>

# Japanese Continuers

## HSC Course 2021

Component	Task 1	Task 2	Task 3	Task 4	Weighting
	Listening, Reading, Writing In-class task	Speaking, Reading, Writing Hand-in/in class task	Speaking, Listening, Reading In-class task	Trial HSC Exam	
	Term 4 Week 8	Term 1 Week 5	Term 2 Week 5, 6	Term 3 Week 4-5	
	2.1, 2.2, 2.3 3.1, 3.2, 3.3, 3.4, 3.5, 3.6	1.1, 1.2, 1.3, 1.4 2.1, 2.2, 2.3 3.1, 3.2, 3.3, 3.4, 3.5, 3.6	1.1, 1.2, 1.3, 1.4 2.1, 2.2, 2.3 3.1, 3.2, 3.3, 3.4, 3.5, 3.6	1.1, 1.2, 1.3, 1.4 2.1, 2.2, 2.3 3.1, 3.2, 3.3, 3.4, 3.5, 3.6	
Speaking		10	5	5	<b>20</b>
Listening & Responding	5		15	10	<b>30</b>
Reading & Responding	5	5	10	10	<b>30</b>
Writing in Japanese	10	5		5	<b>20</b>
<b>Weighting</b>	<b>20</b>	<b>20</b>	<b>30</b>	<b>30</b>	<b>100</b>

# Japanese Extension

## HSC Course 2021

Component	Task 1	Task 2	Task 3	Weighting
	Text Analysis, Writing In-class task	Speaking, Writing Hand-in and in class interview	Trial HSC Exam	
	Term 1 Week 5	Term 2 Week 9,10	Term 3 Week 4-5	
	1.1, 1.2 2.1, 2.2, 2.3	1.1, 1.2	1.1, 1.2 2.1, 2.2, 2.3	
Speaking Skills		14	6	<b>20</b>
Text Analysis	28		12	<b>40</b>
Writing Skills	10	18	12	<b>40</b>
<b>Weighting</b>	<b>38</b>	<b>32</b>	<b>30</b>	<b>100</b>

# Korean Beginners

## HSC Course 2021

Component	Task 1	Task 2	Task 3	Task 4	Weighting
	Listening & Writing In-class task	Speaking, Reading, Writing Hand-in & in-class task	Speaking, Listening & Reading In-class task	Trial HSC Exam	
	Term 4 Week 8	Term 1 Week 5	Term 2 Week 7	Term 3 Week 4-5	
	1.1, 1.2, 1.3, 1.4 2.1, 2.2, 2.3, 2.4, 2.5, 2.6	1.1, 1.2, 1.3, 1.4 2.1, 2.2, 2.3, 2.4, 2.5, 2.6 3.1, 3.2, 3.3, 3.4	1.1, 1.2, 1.3, 1.4 2.1, 2.2, 2.3, 2.4, 2.5, 2.6	1.1, 1.2, 1.3, 1.4 2.1, 2.2, 2.3, 2.4, 2.5, 2.6 3.1, 3.2, 3.3, 3.4	
Speaking		5	10	5	<b>20</b>
Listening & Responding	10		10	10	<b>30</b>
Reading & Responding		10	10	10	<b>30</b>
Writing in Korean	5	10		5	<b>20</b>
<b>Weighting</b>	<b>15</b>	<b>25</b>	<b>30</b>	<b>30</b>	<b>100</b>

# Korean and Literature

## HSC Course 2021

Component	Task 1	Task 2	Task 3	Task 4	Weighting
	Listening, Reading In-class task	Speaking, Writing Hand-in & in- class task	Listening, Reading, Writing in-class task	Trial HSC Exam	
	Term 4 Week 7	Term 1 Week 5	Term 2 Week 7	Term 3 Week 4-5	
	3.1, 3.2, 3.3, 3.4, 3.5, 3.6, 3.7, 3.8	1.1, 1.2, 1.3 2.1, 2.2, 2.3, 2.4	2.1, 2.2, 2.3, 2.4 3.1, 3.2, 3.3, 3.4, 3.5, 3.6, 3.7, 3.8	2.1, 2.2, 2.3, 2.4 3.1, 3.2, 3.3, 3.4, 3.5, 3.6, 3.7, 3.8	
Speaking		10			<b>10</b>
Listening	10		5	5	<b>20</b>
Reading	10		15	15	<b>40</b>
Writing in Korean		15	5	10	<b>30</b>
<b>Weighting</b>	<b>20</b>	<b>25</b>	<b>25</b>	<b>30</b>	<b>100</b>

# Korean Continuers

## HSC Course 2021

Component	Task 1	Task 2	Task 3	Task 4	Weighting
	Listening, Reading, Writing In-class task	Speaking, Reading, Writing Hand-in/in class task	Speaking, Listening, Reading In-class task	Trial HSC Exam	
	Term 4 Week 8	Term 1 Week 5	Term 2 Week 5, 6	Term 3 Week 4-5	
	2.1, 2.2, 2.3 3.1, 3.2, 3.3, 3.4, 3.5, 3.6	1.1, 1.2, 1.3, 1.4 2.1, 2.2, 2.3 3.1, 3.2, 3.3, 3.4, 3.5, 3.6	1.1, 1.2, 1.3, 1.4 2.1, 2.2, 2.3 3.1, 3.2, 3.3, 3.4, 3.5, 3.6	1.1, 1.2, 1.3, 1.4 2.1, 2.2, 2.3 3.1, 3.2, 3.3, 3.4, 3.5, 3.6	
Speaking		10	5	5	<b>20</b>
Listening & Responding	5		15	10	<b>30</b>
Reading & Responding	5	5	10	10	<b>30</b>
Writing in Korean	10	5		5	<b>20</b>
<b>Weighting</b>	<b>20</b>	<b>20</b>	<b>30</b>	<b>30</b>	<b>100</b>

# Korean in Context

## HSC Course 2021

Component	Task 1	Task 2	Task 3	Task 4	Weighting
	Listening, Reading In-class task	Speaking, Listening, Writing In-class task	Speaking, Reading, Writing In-class task	Trial HSC Exam	
	Term 4 Week 9	Term 1 Week 9	Term 2 Week 8	Term 3 Week 4-5	
	3.1, 3.2, 3.3, 3.3, 3.5, 3.6	1.1, 1.2, 1.3, 1.4, 1.5, 1.6 2.1, 2.2, 2.3, 2.4, 2.5 3.1, 3.2, 3.3, 3.4, 3.5, 3.6	1.1, 1.2, 1.3, 1.4, 1.5, 1.6 2.1, 2.2, 2.3, 2.4, 2.5 3.1, 3.2, 3.3, 3.4, 3.5, 3.6	1.1, 1.2, 1.3, 1.4, 1.5, 1.6 2.1, 2.2, 2.3, 2.4, 2.5 3.1, 3.2, 3.3, 3.4, 3.5, 3.6	
Speaking		8	10	7	25
Listening & Responding	7	10		8	25
Reading & Responding	12		5	8	25
Writing in Korean		10	8	7	25
<b>Weighting</b>	<b>19</b>	<b>28</b>	<b>23</b>	<b>30</b>	<b>100</b>

# Legal Studies

## HSC Course 2021

Component	Task 1	Task 2	Task 3	Task 4	Weighting
	CRIME TEST: In class test	FOCUS STUDY 1: In-class research based essay	FOCUS STUDY 2: In-class research based essay	Trial HSC Exam	
	Term 4 Week 8	Term 1 Week 9	Term 2 Week 7	Term 3 Week 4,5	
	H1.1, H3.3, H3.4, H5.2, H5.3	H1.1, H3.4, H4.2, H5.2, H5.3, H5.4	H1.1, H3.4, H4.2, H5.2, H5.3, H5.4	H1.1, H1.2, H2.1, H2.3, H3.1, H3.3, H4.3, H5.3	
Knowledge and understanding	15	15	15	15	60
Research and Inquiry	10	5	5		20
Communication of Legal Studies Information		5	5	10	20
<b>Weighting</b>	<b>25</b>	<b>25</b>	<b>25</b>	<b>25</b>	<b>100</b>



# Mathematics Advanced

## HSC Course 2021

Component	Task 1	Task 2	Task 3	Task 4	Weighting
	Written Test	Written Test	Investigation Project	Trial HSC Exam	
	Term 4 Week 8	Term 1 Week 8	Term 2 Week 10	Term 3 Week 4,5	
	MA12-1 MA12-2 MA12-4 MA12-9 MA12-10	MA12-1 MA12-2 MA12-3 MA12-5 MA12-6 MA12-9 MA12-10	MA12-2 MA12-4 MA12-9 MA12-10	MA12-1 MA12-2 MA12-3 MA12-4 MA12-5 MA12-6 MA12-7 MA12-8 MA12-9 MA12-10	
Understanding, fluency and communication	13	10	12	15	<b>50</b>
Problem solving, reasoning and justification	12	10	13	15	<b>50</b>
<b>Weighting</b>	<b>25</b>	<b>25</b>	<b>20</b>	<b>30</b>	<b>100</b>

# Mathematics Extension 1

## HSC Course 2021

Component	Task 1	Task 2	Task 3	Task 4	Weighting
	Written Test	Investigation Project	Written Test	Trial HSC Exam	
	Term 4 Week 9	Term 1 Week 10	Term 2 Week 9	Term 3 Week 4,5	
	ME12-2 ME12-6	ME12-1 ME12-3 ME12-6	ME12-1 ME12-4 ME12-5 ME12-6	ME12-1 ME12-2 ME12-3 ME12-4 ME12-5 ME12-6	
Understanding, fluency and communication	10	13	12	15	50
Problem solving, reasoning and justification	10	12	13	15	50
<b>Weighting</b>	<b>25</b>	<b>20</b>	<b>25</b>	<b>30</b>	<b>100</b>

# Mathematics Extension 2

## HSC Course 2021

Component	Task 1	Task 2	Task 3	Task 4	Weighting
	Written Test	Investigation Project	Written Test	Trial HSC Exam	
	Term 4 Week 10	Term 1 Week 10	Term 2 Week 10	Term 3 Week 4,5	
	MEX12-1 MEX12-2 MEX12-4	MEX12-1 MEX12-2 MEX12-3	MEX12-1 MEX12-5 MEX12-6	MEX12-1 MEX12-2 MEX12-3 MEX12-4 MEX12-5 MEX12-6	
Understanding, fluency and communication	13	12	10	15	50
Problem solving, reasoning and justification	12	13	10	15	50
<b>Weighting</b>	<b>25</b>	<b>25</b>	<b>20</b>	<b>30</b>	<b>100</b>

# Mathematics Standard 2

## HSC Course 2021

Component	Task 1	Task 2	Task 3	Task 4	Weighting
	Written Test	Investigation Project	Written Test	Trial HSC Exam	
	Term 4 Week 8	Term 1 Week 8	Term 2 Week 8	Term 3 Week 4,5	
	MS11-2, 5, 6, 9, 10 MS2-12-1, 3, 4, 5, 6, 9, 10	MS2-12-7,8,10	MS2-12-3, 4, 5, 7, 9, 10	MS11 (1-10) MS2-12 (1-10)	
Understanding, fluency and communication	12	10	13	15	50
Problem solving, reasoning and justification	13	10	12	15	50
<b>Weighting</b>	<b>25</b>	<b>20</b>	<b>25</b>	<b>30</b>	<b>100</b>

# Mathematics Standard 1

## HSC Course 2021

Component	Task 1	Task 2	Task 3	Task 4	Weighting
	Written Test	Investigation Project	Written Test	Trial HSC Exam	
	Term 4 Week 9	Term 1 Week 8	Term 2 Week 8	Term 3 Week 4,5	
	MS1-12-2, 3, 4, 7, 9, 10	MS1-12-8, 9, 10	MS1-12-3, 4, 9, 10	MS1-12 (1-10)	
Understanding, fluency and communication	12	10	13	15	50
Problem solving, reasoning and justification	13	10	12	15	50
<b>Weighting</b>	<b>25</b>	<b>20</b>	<b>25</b>	<b>30</b>	<b>100</b>

# Modern History

## HSC Course 2021

Component	Task 1	Task 2	Task 3	Task 4	Weighting
	<b>CORE STUDY:</b>  <b>Power and Authority in the Modern World 1919-1946</b>	<b>NATIONAL STUDY:</b>  <b>Russia 1917-1941</b>	<b>PEACE AND CONFLICT:</b>  <b>Conflict in Indochina</b>	<b>Trial HSC</b>  <b>Core – 5% Russia – 5% Indochina – 5% Civil Rights-10%</b>	
Nature of Assessment	Source Analysis and extended response	Historical Analysis	Essay	Exam 3 hours	
Estimated time of assessment	Term 1 Week 8	Term 2 Week 9	Term 2 Week 9	Term 3 Weeks 4-5	
Outcomes	MH12-2, MH12-3, MH12-6, MH12-9	MH12-1, MH12-4, MH12-8, MH12-9	MH12-1, MH12-2, MH12-3, MH12-8, MH12-9	MH12-4, MH12-5, MH12-6, MH12-7, MH12-9	
Knowledge and Understanding	10	10	10	10	<b>40</b>
Source-based Skills	15			5	<b>20</b>
Historical Inquiry and research		10	10		<b>20</b>
Communication of historical understanding		5	5	10	<b>20</b>
<b>Weighting</b>	<b>25</b>	<b>25</b>	<b>25</b>	<b>25</b>	<b>100</b>

# Music 1

## HSC Course 2021

Component	Task 1	Task 2	Task 3	Task 4	Weighting
	Composition pieces, folio and activities representing current topic/s	Musicology Research Folio on current topic/s supported with listening and analysis and Viva Voce	Presentation of performances representing the topics	<b>Trial HSC Exam</b> Aural/ Musicology Paper Core Performance Piece Electives 1, 2 and 3. Depending on the elective this may be a performance; or a musicology viva voce or portfolio; or material from the composition portfolio*	
	Term 4 Week 9	Term 1 Week 8	Term 2 Week 9	Term 3 Week 4,5	
	H3, H4, H7	H4, H5, H6	H1, H2, H9	H1*, H2*, H3*, H4*, H5*, H6*, H7*, H8*	
Core Performance			25		25
Core Composition	25				25
Core Musicology		25			25
Core Aural				10	10
Elective 1				5	5
Elective 2				5	5
Elective 3				5	5
<b>Weighting</b>	<b>25</b>	<b>25</b>	<b>25</b>	<b>25</b>	<b>100</b>

\*Please note that it is the responsibility of the student to cover the costs of accompanists for performances.

# Music 2

## HSC Course 2021

Component	Task 1	Task 2	Task 3	Task 4	Weighting
	Solo or ensemble performance representing the Mandatory topic  1 piece	Practice Aural skills and Musicology Exam. Take home essay question based on Mandatory Topic.	Development of composition first draft (score) and portfolio including analysis of compositional techniques	<b>Trial HSC Exam</b>  Aural/ Musicology Paper  Core Performance and Sight Singing  Music 2 Elective: this could be Performance, Composition or Musicology*	
	Term 1 Week 2	Term 1 Week 9	Term 2 Week 7	Term 3 Week 4,5	
	H1, H6, H8	H2, H5, H7, H8	H2, H3, H4, H5	H1*, H2*, H3*, H4*, H5*, H6*, H7*, H8*, H9*	
Core Performance	20			10	<b>30</b>
Core Composition			25		<b>25</b>
Core Musicology		15		5	<b>20</b>
Core Aural		10		5	<b>15</b>
Performance or Composition or Musicology Elective				10	<b>10</b>
<b>Weighting</b>	<b>20</b>	<b>25</b>	<b>25</b>	<b>30</b>	<b>100</b>



# Music Extension

## HSC Course 2021

Component	Task 1	Task 2	Weighting
	<ul style="list-style-type: none"> <li>• Performance – performance of repertoire and background research of repertoire <b>or</b></li> <li>• Composition portfolio – analysis of works and styles and draft compositions <b>or</b></li> <li>• Musicology portfolio – research and critical analysis of works</li> </ul>	<b>Trial HSC Exam</b> <ul style="list-style-type: none"> <li>• Performance – performance of repertoire and critical appraisal of own concert practice <b>or</b></li> <li>• Composition portfolio – viva voce including development and resolution of ideas, musical concepts and techniques <b>or</b></li> <li>• Musicology portfolio – viva voce including development and resolution of topic, sources, and ideas</li> </ul>	
	Term 1 Week 10	Term 3 Week 4,5	
	H1*, H2*, H3*, H4*, H5*, H6*	H1*, H2*, H3*, H4*, H5*, H6*	
Performance <b>OR</b> Composition <b>OR</b> Musicology	50	50	<b>100</b>
<b>Weighting</b>	<b>25</b>	<b>25</b>	<b>50</b>

\* Teachers will select the appropriate outcomes based on the Performance or Composition or Musicology options selected by each student.

# Personal Development, Health and Physical Education

## HSC Course 2021

Component	Task 1	Task 2	Task 3	Task 4	Weighting
	Research and In-class task	Video stimulus and In-class task	Report	Trial HSC Examination	
	Term 4 Week 7	Term 1 Week 7	Term 2 Week 5	Term 3 Week 4,5	
	H1, H2,H3, H5, H15, H16	H7, H8, H10, H11, H16, H17	H8, H13, H16, H17	H1 - H17	
Knowledge and understanding of: <ul style="list-style-type: none"> <li>• factors that affect health and health promotion for improved performance</li> <li>• the way the body moves</li> </ul>	10	10	5	10	35
Skills in: <ul style="list-style-type: none"> <li>• Influencing personal and community health</li> <li>• Taking action to improve training, participation and performance in physical activity</li> </ul>	10	5	5	10	30
Skills in critical thinking, research and analysis	5	10	10	10	35
<b>Weighting</b>	<b>25</b>	<b>25</b>	<b>20</b>	<b>30</b>	<b>100</b>

# Physics

## HSC Course 2021

Component	Task 1	Task 2	Task 3	Task 4	Weighting
	Topic Test Advanced Mechanics	Depth Study Electromagn etism	Topic Test Light	Trial HSC Examination	
	Term 4 Week 7	Term 1 Week 8	Term 2 Week 6	Term 3 Week 4,5	
	PH11/12-4 PH11/12-5 PH11/12-6 PH11/12-7 PH12-12	PH11/12-1 PH11/12-2 PH11/12-3 PH11/12-4 PH11/12-5 PH12-13	PH11/12-1 PH11/12-2 PH11/12-3 PH11/12-4 PH11/12-7 PH12-14	PH11/12-5 PH11/12-6 PH11/12-7 PH12-15	
Skills in Working Scientifically	10	20	15	15	<b>60</b>
Knowledge and Understanding	10	5	10	15	<b>40</b>
<b>Weighting</b>	<b>20</b>	<b>25</b>	<b>25</b>	<b>30</b>	<b>100</b>

# Society and Culture

## HSC Course 2021

Component	Task 1	Task 2	Task 3	Task 4	Weighting
	PIP Proposal and Statement of Intent	Popular Culture Oral Task	Depth Studies: In-class written response	Trial HSC Written Exam	
	Term 4 Week 8	Term 1 Week 8 A  Friday 19th March	Term 2 Week 7 A  Friday 4th June	Term 3 Week 4,5	
	H1, H6, H8, H10	H6, H2, H7, H8	H3, H4, H5, H9, H10	H1, H3, H5, H10	
Knowledge and understanding of course content	5	10	10	25	<b>50</b>
Application and evaluation of social and cultural research methods	15	10	5		<b>30</b>
Communication of information, ideas and issues in appropriate forms	5	5	5	5	<b>20</b>
<b>Weighting</b>	<b>25</b>	<b>25</b>	<b>20</b>	<b>30</b>	<b>100</b>

First draft of PIP is due on your last lesson in **Week 4, Term 2**.

# Sports Coaching (VET)

## HSC Course 2021

VET courses allow students to gain both HSC or RoSA qualifications and a qualification recognised throughout Australia as part of the Australian Qualification Framework (AQF). These qualifications are widely recognised by industry, employers and tertiary training providers and universities, and will assist students to move to various education and training sectors and employment.

### Vocational Education courses involve:

**Dual accreditation** – the curriculum framework includes courses which are accredited for the HSC (4 Preliminary and/or HSC units in total) and provides students with the opportunity to obtain nationally recognised vocational qualifications (SIT20316 Certificate II in Hospitality).

**Work placement** – a mandatory component of VET courses is 70 hours of structured work placement. 35 hours of work placement must be completed in Year 11 and 35 hours of work placement must be completed in Year 12. Students must complete all work placement hours to be awarded the HSC credential.

**Practical work** – approximately 1/3 of the course work involves practical experiences undertaken in the classroom and in an industry setting. It is important that students are prepared for each lesson and are vigilant in their attendance so that all requirements are met.

### Method of Assessment

Hospitality assessment in Years 11 and 12 is **competency based** with continual and ongoing assessment throughout the year.

This means that a student is assessed on their performance of knowledge or skills, which is required by **industry standards**.

Competency based assessment is largely activity-based and practical. However, competency also implies that an individual displays an understanding of the knowledge, which underpins the practical performance.

A student is deemed competent when they:

- carry out the task to an acceptable industry standard
- organise and manage a range of different tasks
- respond appropriately to a breakdown in routine
- apply existing knowledge and skills to new situations
- use communication and interpersonal skills that suit the work environment.

Students have the opportunity to attempt a task a reasonable number of times in order to fulfil the requirements of a competency. Students may need to arrange a suitable time outside of normal class time to complete competency tasks. Students will be required to purchase their own ingredients for any make-up practical lessons, if necessary.



Education

ULTIMO 90072

**SPORT COACHING – CERTIFICATE III BOARD ENDORSED COURSE ASSESSMENT SCHEDULE**

**Preliminary Year 2021 - HSC 2021**

QUALIFICATION: SIS30519 Certificate III in Sport Coaching  
Training Package: SIS Sport, Fitness and Recreation (Version 4)

**NESA Course:**  
50418  
**LMBR UI Code:**  
(11 or 12)  
**SIS30519150418**

Training Package: SIS Sport, Fitness and Recreation (Version 1.1)							
TERM	Unit Code	Units Of Competency	AQF CORE / ELECTIVE	HSC STATUS	HSC INDICATI	Assessment Task Cluster & Methods of Assessment	HSC requirements
Term 1-2	5 Preliminary UOC's						240 Indicative hours over 2 years
	HLTWHS001 SISXIND006	Participate in workplace health and safety Conduct sport, fitness and recreation events	C E - E	C E	15 30	<b>Cluster A: Tournament Time</b> Direct Observation, Product Based Method and Questioning.	
Term 2-3	SISSSCO003 BSBRSK401	Meet participant coaching needs Identify risk and apply risk management procedures	C C	C C	30 25	<b>Cluster B: Playing it Safe</b> Direct Observation, Product Based Method and Questioning.	Minimum 35 hrs mandatory work placement
Stand alone Unit Term 3	HLTAID003	Provide First Aid – Royal Life Saving Australia First Aid Course	C	C	20	<b>Cluster F:</b> Students receive a First Aid Certificate on completion of this course. Online and Practical examination.	
Term 4	5 HSC UOCs						
	SISSSOF002	Continuously improve officiating skills and knowledge	E-E	E	15	<b>Cluster C:</b> (Complete 2 of the 3 elective options) Continuously improve officiating skills and knowledge Instruct strength and conditioning techniques	
	SISXCAI009	Instruct strength and conditioning techniques	E-E	E	25		
	SISXDIS001	Facilitate inclusion for people with a disability	E-E	E	20		
Term 5-6	SISSSCO002 SISSCO005	Work in community coaching role Continuously improve coaching skills and knowledge	C C	C C	30 30	<b>Cluster D:</b> Online Quiz and Student Developed Quiz (Product Based) Portfolio, Direct Observation and Questioning	
Term 7	SISSSCO012	Coach sports participants up to an intermediate level	E-A	E	30	<b>Cluster E:</b> Direct Observation, Product Based Method and Questioning.	
NESA requires students to study a minimum of 240 hours to meet Preliminary and HSC requirements.			Total hours: 240		This course is a VET Board Endorsed Course and does not count towards the ATAR. No HSC exam in this course.		

# Studies of Religion 2 unit

## HSC Course 2021

Component	Task 1	Task 2	Task 3	Task 4	Weighting
	Hinduism Structured Response	Buddhism Essay	Islam Stimulus Analysis	Religion in Australia, Religion and Non-religion & Peace (plus previous topics)	
	In-class test	Research essay	In-class essay	Trial HSC Exam	
	Term 4 Week 6	Term 1 Week 7	Term 2 Week 7	Term 3 Week 4,5	
	H1, H2, H7, H8, H9	H1, H2, H4, H8, H9	H1, H2, H6, H8, H9	H3, H4, H5, H8, H9	
Knowledge and understanding of course content	10	10	5	15	40
Source-based skills	5		5	10	20
Investigation and research		15	5		20
Communication of information, ideas and issues in appropriate form	5	5	5	5	20
<b>Weighting</b>	<b>20</b>	<b>30</b>	<b>20</b>	<b>30</b>	<b>100</b>

# Studies of Religion 1 unit

## HSC Course 2021

Component	Task 1	Task 2	Task 3	Weighting
	<b>Buddhism Depth Study</b> Research Essay	<b>Islam Depth Study</b> In-Class Test	<b>All Topics</b> Trial HSC Exam	
	Term 4 Week 7	Term 2 Week 2	Term 3 Week 4,5	
	H1, H2, H7, H8, H9	H4, H5, H6, H8, H9	H1, H2, H4, H5, H6, H8	
Knowledge and understanding of course content	5	5	10	<b>20</b>
Source-based skills		5	5	<b>10</b>
Investigation and research	5	5		<b>10</b>
Communication of information in appropriate form	5		5	<b>10</b>
<b>Weighting</b>	<b>15</b>	<b>15</b>	<b>20</b>	<b>50</b>



# Textiles and Design

## HSC Course 2021

Component	Task 1	Task 2	Task 3	Task 4	Weighting
	Contemporary Designer Case Study	MTP Designing and Planning Presentation	Project Development and Management Report	Trial HSC Written Exam	
	Term 4 Week 5  (in class hand in)	Term 4 Week 9  (oral) + 3pm (hand in written proposal)	Term 2 Week 8  (in class hand in)	Term 3 Week 4, 5	
	H5.1, H6.1	H2.1, H2.3, H4.2	H1.1, H1.2, H2.2, H3.1, H4.2	H1.3, H3.1, H3.2, H4.1, H5.2, H6.1	
Knowledge and understanding of course content	20		5	25	50
Skills and knowledge in the design, manufacture and management of a major textiles project		20	30		50
<b>Weighting</b>	<b>20</b>	<b>20</b>	<b>35</b>	<b>25</b>	<b>100</b>

**Textiles & Design Major Projects completion and hand in date in August 2021 – TBA.**

**BOW Exhibition – Textiles & Design – is in Term 3, Week 3.**

# Visual Arts

## HSC Course 2021

Component	Task 1	Task 2	Task 3	Task 4	Weighting
	BOW* Development of two prototypes with Visual Arts Diary documentation	a. In-class essay based on case study content b. 50% of BOW* Development with Visual Arts Diary documentation	75% of a Body of Work* including Visual Arts Diary documentation and works under development	Trial HSC Exam – Art Criticism and Art History	
	Term 4 Week 7	Term 1 Week 5	Term 2 Week 5	Term 3 Week 4,5	
	H1, H2, H3, H4, H5	H7, H8, H9	H1, H2, H3, H4, H5	H7, H8, H9	
Artmaking	10	15	25		50
Art Criticism and Art History		25		25	50
<b>Weighting</b>	<b>10</b>	<b>40</b>	<b>25</b>	<b>25</b>	<b>100</b>

**BOW Exhibition is in Term 3, Week 3. All artworks are to be completed by this time for exhibition and to prepare for marking by NESAs.**

\*Please note that it is the responsibility of the student to cover the costs of Body of Work artmaking materials and production.

# Work Studies

## HSC Course 2021

Component	Task 1	Task 2	Task 3	Task 4	Weighting
	Career Plan and Portfolio (My Working Life)	Holiday Budget (Personal Finance)	Research Task (module study)	Trial HSC Exam	
	Term 1 Week 4	Term 2 Week 3	Term 2 Week 10	Term 3 Week 4, 5	
	Outcomes 3, 4, 7	Outcomes 5, 8, 9	Outcomes 1, 5, 6	Outcomes 2, 7, 9	
Knowledge and Understanding	5	0	5	20	30
Skills	20	25	20	5	70
<b>Weighting</b>	<b>25</b>	<b>25</b>	<b>25</b>	<b>25</b>	<b>100</b>